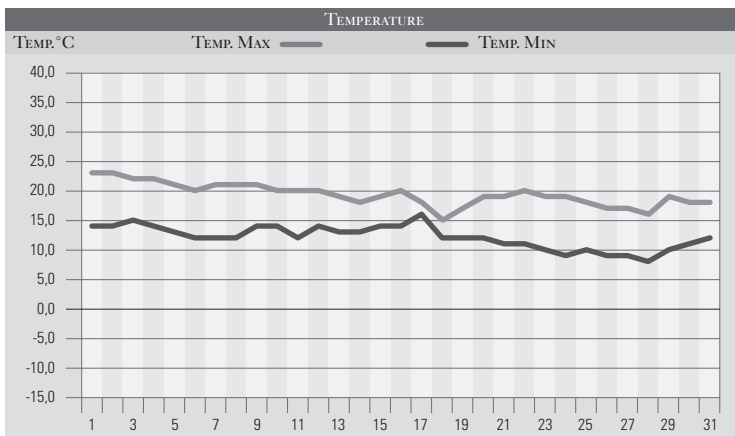


OTTOBRE 1983

GIORNO	T.MIN	T.MAX	PREC.(mm)	OSSERVAZIONI
1	14,0	23,0		Poco nuvoloso
2	14,0	23,0		Poco nuvoloso
3	15,0	22,0		Tempo stabile sereno
4	14,0	22,0		Sereno
5	13,0	21,0		Sereno
6	12,0	20,0		Alta pressione livellata
7	12,0	21,0		Sereno qualche foschia la mattina
8	12,0	21,0		Banchi di nebbia nella valle del Tevere al mattino
9	14,0	21,0		Sereno, qualche foschia la mattina
10	14,0	20,0		Sereno
11	12,0	20,0		Sereno, poco nuvoloso
12	14,0	20,0		Variabile
13	13,0	19,0		Variabile
14	13,0	18,0		Poco nuvoloso
15	14,0	19,0		Variabile
16	14,0	20,0		Variabile
17	16,0	18,0	46,0	Coperto piogge estese al mattino rovesci nel pom.
18	12,0	15,0		Forte vento da nord-est, temperatura in diminuz.
19	12,0	17,0		Variabile
20	12,0	19,0		Sereno, venti deboli da est
21	11,0	19,0		Poco nuvoloso
22	11,0	20,0		Poco nuvoloso, ancora ventilazione da nord
23	10,0	19,0		Poco nuvoloso
24	9,0	19,0		Sereno, nuvoloso nel pomeriggio
25	10,0	18,0		Variabile
26	9,0	17,0		Variabile
27	9,0	17,0		Lento peggioramento, nuvoloso
28	8,0	16,0		Nuvoloso
29	10,0	19,0		Nuvoloso
30	11,0	18,0		Variabile
31	12,0	18,0	26,0	Pioggia nella notte e al mattino variabile pom.
MED.TOT.	12,1	19,3	72,0	



RIEPILOGO		
GIORNI DI PIOGGIA	2	Anche in questo mese continua a manifestarsi la componente siccitosa, un solo episodio piovoso di una certa consistenza. Temperature leggermente superiori alle medie solo nei valori minimi.
TEMPERATURE MIN °C	8,0	
TEMPERATURE MAX °C	23,0	
PIOGGIA MAX 24 H (MM)	46,0	