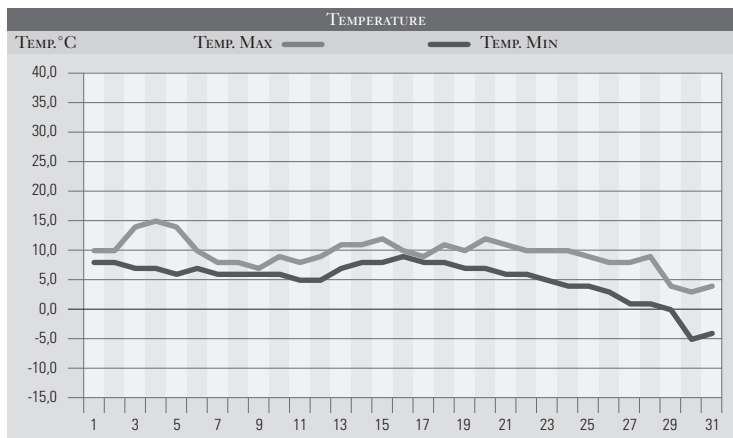


DICEMBRE 1982

GIORNO	T.MIN	T.MAX	PREC.(mm)	OSSERVAZIONI
1	8,0	10,0	13,0	Coperto, piogge abb. a nord reg., (piena Tevere)
2	8,0	10,0		Variabile con tramontana
3	7,0	14,0		Variabile, temperature elevate
4	7,0	15,0		Poco nuvoloso
5	6,0	14,0		Variabile
6	7,0	10,0		Nebbia, sereno
7	6,0	8,0	4,0	Coperto, piogge sparse
8	6,0	8,0	8,0	Coperto, piogge
9	6,0	7,0	12,0	Coperto, piogge
10	6,0	9,0		Variabile, intense piogge a sud-est reg.
11	5,0	8,0	5,0	Coperto, piogge, neve/900m
12	5,0	9,0	5,0	Molto nuvoloso, pomeriggio, piogge sparse
13	7,0	11,0	4,0	Variabile, temperatura in aumento
14	8,0	11,0	30,0	Coperto, piogge dal pomeriggio intense
15	8,0	12,0		Variabile
16	9,0	10,0		Nuvoloso, peggioramento, caldo
17	8,0	9,0	2,0	Coperto, pioggia
18	8,0	11,0	60,0	Coperto, pioggia estesa e abb., frane e allagamenti
19	7,0	10,0		Poco nuv., straripamento Rio Piccolo a Lidarno (PG)
20	7,0	12,0		Variabile, peggioramento
21	6,0	11,0	36,0	Coperto, piogge intense dal pomeriggio
22	6,0	10,0	34,0	Coperto, ancora pioggia persistente, frane ovunque
23	5,0	10,0		Variabile-coperto
24	4,0	10,0	1,0	Coperto, brevi nevicate/700m
25	4,0	9,0		Poco nuvoloso
26	3,0	8,0		Poco nuvoloso
27	1,0	8,0		Sereno, splendida giornata
28	1,0	9,0		Poco nuvoloso
29	0,0	4,0	2,0	Improvvisa tempesta, freddo da nord-est, neve/300m
30	-5,0	3,0		Sereno forte gelata
31	-4,0	4,0		Sereno freddo
MED.TOT.	5,2	9,5	216,0	



RIEPILOGO		
GIORNI DI PIOGGIA	14	Decisamente un mese di dicembre estremamente piovoso con persistenti correnti atlantiche-mediterranee umide e piovose fino a determinare notevoli danni al territorio con frane e straripamenti dei corsi d'acqua. Le precipitazioni sono risultate ben al di sopra del doppio.
TEMPERATURE MIN°C	-5,0	
TEMPERATURE MAX°C	12,0	
PIOGGIA MAX 24 H(MM)	60,0	