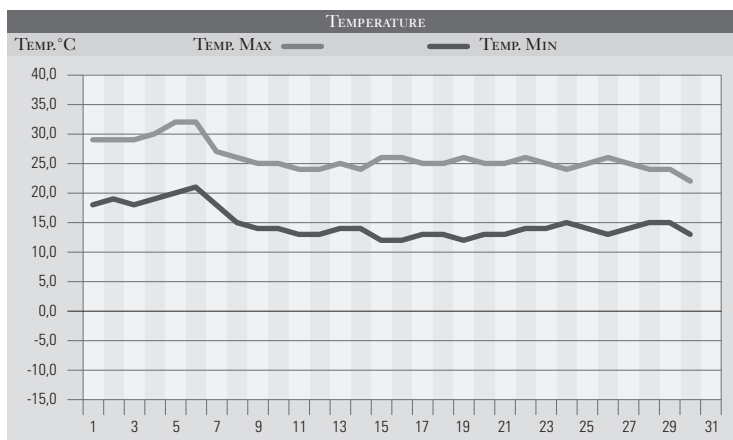


SETTEMBRE 1982

GIORNO	T.MIN	T.MAX	PREC.(mm)	OSSERVAZIONI
1	18,0	29,0		Poco nuvoloso
2	19,0	29,0		Pressione in aumento
3	18,0	29,0		Poco nuvoloso, venti da est
4	19,0	30,0		Caldo umido
5	20,0	32,0		Sereno caldo, 90% di umidità
6	21,0	32,0		Poco nuvoloso, peggioramento
7	18,0	27,0	36,0	Molto nuvoloso, temporale forte
8	15,0	26,0		Temperature accettabili, poco nuvoloso
9	14,0	25,0		Variabile
10	14,0	25,0		Variabile
11	13,0	24,0		Variabile
12	13,0	24,0		Venti da est, fresco
13	14,0	25,0		Poco nuvoloso
14	14,0	24,0		Poco nuvoloso, correnti fresche da est
15	12,0	26,0		Poco nuvoloso
16	12,0	26,0		Sereno
17	13,0	25,0		Sereno
18	13,0	25,0		Sereno
19	12,0	26,0		Alta pressione, sereno
20	13,0	25,0		Sereno
21	13,0	25,0		Variabile
22	14,0	26,0	10,0	Variabile-nuvoloso, piovaschi e rovesci locali
23	14,0	25,0		Variabile
24	15,0	24,0	2,0	Rovesci sparsi, nuvoloso
25	14,0	25,0		Poco nuvoloso
26	13,0	26,0		Venti da sud, poco nuvoloso
27	14,0	25,0		Aumento dell'umidità, variabile
28	15,0	24,0		Nuvoloso
29	15,0	24,0		Nuvoloso, ventilazione meridionale
30	13,0	22,0	40,0	Molto nuvoloso, temporale esteso dalla sera
31				
MED.TOT.	14,8	26,0	88,0	



RIEPILOGO		
GIORNI DI PIOGGIA	4	Mese che rientra nei parametri delle norme climatiche di settembre.
TEMPERATURE MIN °C	12,0	
TEMPERATURE MAX °C	32,0	
PIOGGIA MAX 24h (MM)	40,0	