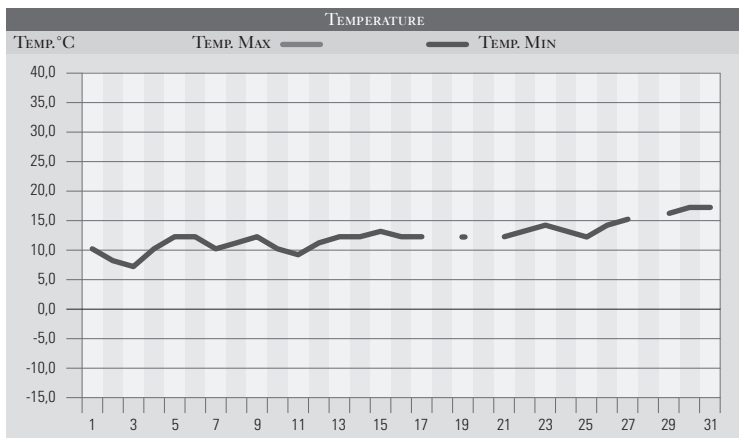


MAGGIO 1982

GIORNO	T.MIN	T.MAX	PREC.(mm)	OSSERVAZIONI
1	10,0	19,0		Venti da est, variabile fresco
2	8,0	20,0		Variabile, vento in attenuazione
3	7,0	21,0		Nuvoloso-poco nuvoloso
4	10,0	22,0		Velato
5	12,0	24,0		Sereno, temperatura in aumento
6	12,0	19,0		Cambiamento delle correnti, nuvoloso da sud
7	10,0	18,0	3,0	Variabile, coperto con piogge sparse
8	11,0	19,0	12,0	Variabile, cielo africano, piogge sparse, vento da sud
9	12,0	17,0	38,0	Coperto, piogge intense, nubifragio pomeriggio
10	10,0	17,0	18,0	Coperto, piogge estese torrenziali a nord-ovest reg.
11	9,0	18,0		Piena del Tevere, tempo in miglioramento
12	11,0	19,0		Pressione in aumento, poco nuvoloso
13	12,0	23,0		Sereno
14	12,0	24,0		Sereno, temperatura in aumento
15	13,0	24,0		Sereno
16	13,0	25,0		Sereno
17	13,0	26,0		Sereno
18		25,0		Poco nuvoloso
19	12,0	26,0		Poco nuvoloso
20				Poco nuvoloso
21	12,0	26,0		Qualche nuvola pomeridiana, bel tempo
22	13,0	27,0		Ancora bella giornata, temperatura in aumento
23	14,0	25,0		Sereno variabile in serata
24	13,0	24,0		Nuvoloso piovvaschi sparsi
25	12,0	22,0		Variabile fresco
26	14,0			Poco nuvoloso, aumento della pressione
27	15,0	27,0		Sereno
28				Sereno
29	16,0	28,0		Sereno, temperature in sensibile aumento
30	17,0	29,0		Sereno
31	17,0	30,0		Sereno caldo
Med.Tot.	12,1	23,0	71,0	



RIEPILOGO

GIORNI DI PIOGGIA	4	Un mese che ha visto un solo ma intenso fenomeno di mal tempo, al culmine di un periodo con temperature decisamente basse per il periodo.
TEMPERATURE MIN °C	7,0	
TEMPERATURE MAX °C	30,0	
PIOGGIA MAX 24 H (MM)	38,0	