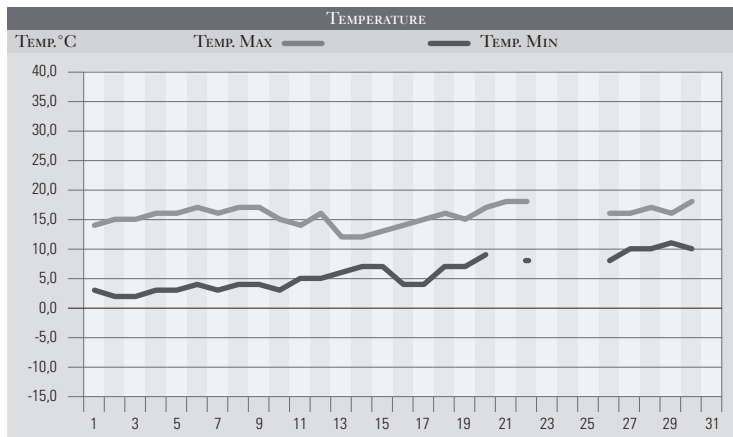


APRILE 1982

GIORNO	T.MIN	T.MAX	PREC.(mm)	OSSERVAZIONI
1	3,0	14,0		Sereno
2	2,0	15,0		Sereno
3	2,0	15,0		Sereno
4	3,0	16,0		Sereno, siccità crescente
5	3,0	16,0		Sereno
6	4,0	17,0		Sereno
7	3,0	16,0		Sereno
8	4,0	17,0		Sereno, qualche velatura
9	4,0	17,0		Sereno, poco nuvoloso
10	3,0	15,0		Sereno
11	5,0	14,0		Poco nuvoloso
12	5,0	16,0		Poco nuvoloso-nuvoloso in serata
13	6,0	12,0	10,0	Coperto, piogge dal pomeriggio
14	7,0	12,0	30,0	Coperto, piogge estese e abbondanti
15	7,0	13,0		Vento di tramontana forte, variabile
16	4,0	14,0		Variabile
17	4,0	15,0		Poco nuvoloso
18	7,0	16,0		Nuvoloso
19	7,0	15,0		Temperature inferiori alle medie
20	9,0	17,0		Poco nuvoloso, variabile
21		18,0		Variabile da nord-ovest
22	8,0	18,0		Venti da nord, poco nuvoloso
23				Correnti da est
24				Poco nuvoloso
25				Sereno
26	8,0	16,0		Sereno
27	10,0	16,0		Variabile da est
28	10,0	17,0		Poco nuvoloso, freddo
29	11,0	16,0		Poco nuvoloso
30	10,0	18,0		Sereno, venti da est
31				
MED.TOT.	5,7	15,6	40,0	



RIEPILOGO		
GIORNI DI PIOGGIA	2	Un solo episodio di mal tempo in tutto il mese a conferma della siccità che va avanti dall'inizio dell'anno. Le temperature sono state decisamente inferiori alle medie del periodo a causa del perdurare di correnti fresche da est per tutta la seconda metà del mese.
TEMPERATURE MIN °C	2,0	
TEMPERATURE MAX °C	18,0	
PIOGGIA MAX 24 H (MM)	30,0	