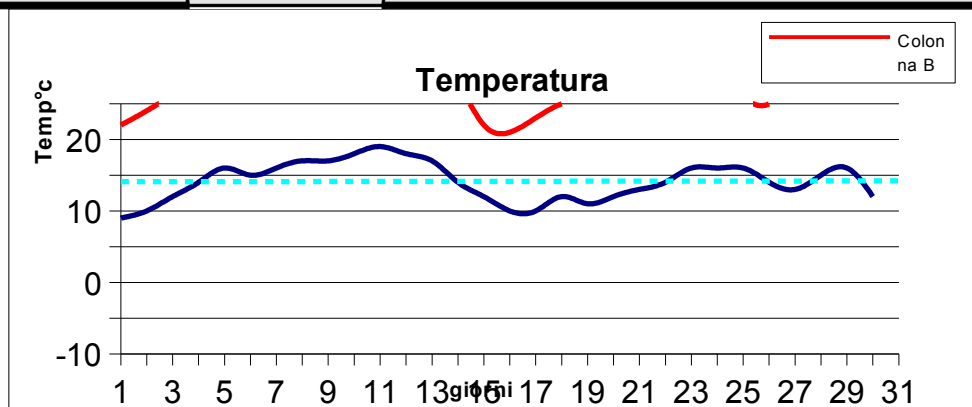


GIUGNO 2014

GIORNO	Tmin	Tmax	precipitaz.(mm)	osservazioni
1	9,0	22,0	0,0	sereno/poco nuvoloso vento deb.da nord
2	10,0	24,0	0,0	sereno
3	12,0	26,0	0,0	poco nuvoloso
4	14,0	27,0	0,0	poco nuvoloso
5	16,0	28,0	0,0	poco nuvoloso
6	15,0	29,0	0,0	sereno
7	16,0	30,0	0,0	sereno
8	17,0	32,0	0,0	sereno, caldo in aumento
9	17,0	33,0	0,0	sereno, caldo
10	18,0	34,0	0,0	sereno, caldo
11	19,0	34,0	0,0	sereno, caldo
12	18,0	33,0	0,0	variabile, temporali sparsi e caldo
13	17,0	32,0	4,0	poco nuvoloso, temporale alto Tevere-Gubbio
14	14,0	28,0	0,0	nuvoloso, rovesci sparsi sud-regione
15	12,0	22,0	9,0	nuvoloso, piogge sparse, abb.sud regione
16	10,0	21,0	15,0	nuvoloso, piogge sparse
17	10,0	23,0	0,0	variabile, rovesci sparsi
18	12,0	25,0	0,0	variabile, rovesci sparsi
19	11,0	26,0	7,0	variabile, piovaschi
20	12,0	27,0	0,0	sereno/poco nuvoloso
21	13,0	29,0	0,0	sereno
22	14,0	30,0	0,0	sereno
23	16,0	28,0	0,0	velato al mattino
24	16,0	29,0	0,0	variabile
25	16,0	26,0	4,0	forte libeccio e temporale alto Tevere
26	14,0	25,0	0,0	temporale alto Tevere
27	13,0	29,0	0,0	sereno
28	15,0	31,0	0,0	sereno
29	16,0	28,0	0,0	velato, venti da sud
30	12,0	26,0	12,0	temporale esteso notturno, fresca la giornata
31				
med,tot	14,1	27,9	51,0	



RIEPILOGO	
giorni di pioggia	6
TEMP MIN °C	9,0
TEMP MAX °C	34,0
MAX PIOGGIA 24/h	15,0