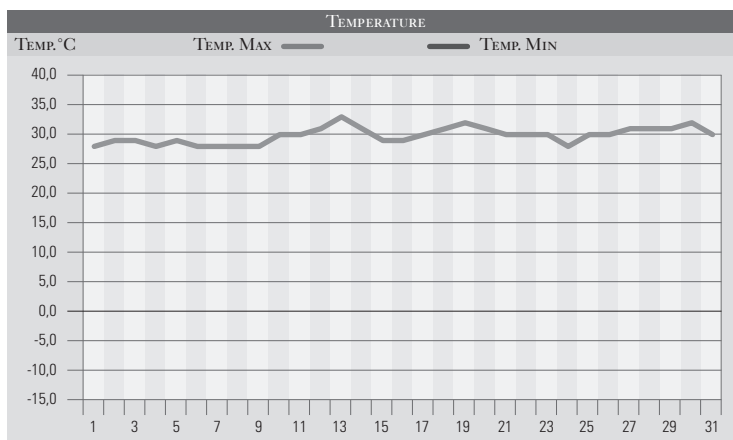


LUGLIO 1979

GIORNO	T _{MIN}	T _{MAX}	PREC.(mm)	OSSERVAZIONI
1	15,0	28,0		Variabile
2	14,0	29,0	15,0	Molto nuv., forte temporale di sera a nord reg.
3	16,0	29,0		Variabile
4	16,0	28,0		Variabile
5	15,0	29,0		Poco nuvoloso, miglioramento
6	13,0	28,0		Sereno, poco nuvoloso
7	13,0	28,0		Sereno, ventilazione da nord-est
8	14,0	28,0		Sereno
9	16,0	28,0		Sereno, ventilazione da nord-est
10	17,0	30,0		Sereno
11	18,0	30,0		Sereno
12	19,0	31,0		Sereno
13	20,0	33,0		Sereno, afoso, correnti da sud
14	17,0	31,0		Variabile, sviluppo di nubi in montagna
15	18,0	29,0		Variabile
16	16,0	29,0		Sereno-poco nuvoloso il pomeriggio
17	17,0	30,0		Variabile, rovesci sparsi
18	18,0	31,0		Poco nuvoloso
19	19,0	32,0		Sereno variabile
20		31,0		Variabile
21		30,0		Sereno, poco nuvoloso il pomeriggio
22		30,0		Sereno al mattino, nuvoloso il pomeriggio
23		30,0		Poco nuvoloso
24	16,0	28,0		Sereno
25	16,0	30,0		Sereno
26	17,0	30,0		Poco nuvoloso
27	17,0	31,0		Variabile
28	18,0	31,0		Sereno
29	19,0	31,0		Sereno
30	19,0	32,0		Sereno, caldo in aumento
31	19,0	30,0		Sereno
MED.TOT.	16,7	29,8	15,0	



RIEPILOGO		
GIORNI DI PIOGGIA	1	Temperature nella norma e tutto sommato un bel mese estivo, dove però non sono mancati numerosi temporali pomeridiani in particolare nella fascia appenninica, ma anche questi fanno parte dell'estate tipica della nostra regione.
TEMPERATURE MIN °C	13,0	
TEMPERATURE MAX °C	33,0	
PIOGGIA MAX 24 H (MM)	15,0	