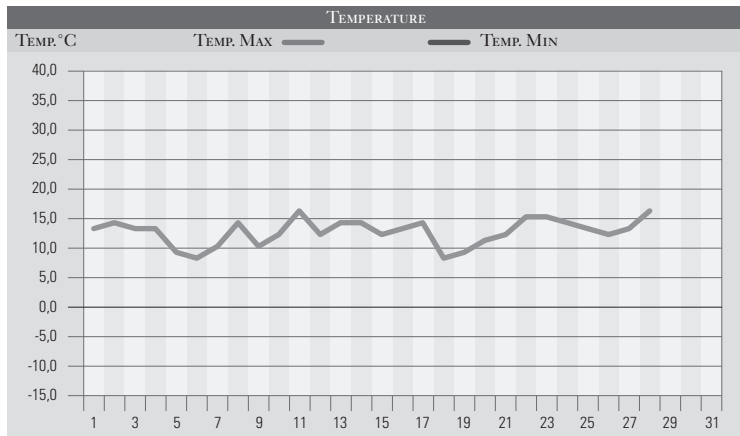


# FEBBRAIO 2007

GIORNO	T.MIN	T.MAX	PREC.(mm)	OSSERVAZIONI
1	4,0	13,0		Sereno
2	1,0	14,0		Poco nuvoloso
3	-2,0	13,0		Sereno, debole gelata al mattino
4	2,0	13,0		Sereno, tramontana moderata da nord-est
5	-2,0	9,0		Sereno
6	-3,0	8,0		Sereno, locali brinate, nuvoloso dal pomeriggio
7	4,0	10,0	15,0	Coperto con piogge sparse al mattino
8	8,0	14,0	18,0	Coperto, pioviggini in serata-grandine a Perugia città
9	8,0	10,0	23,0	Coperto dal mattino, piogge intense-neve/1500m
10	8,0	12,0		Da nuvoloso a coperto
11	6,0	16,0		Variabile da ovest temperature in aumento
12	10,0	12,0	12,0	Da nuv. a coperto con piogge intense dalla serata
13	8,0	14,0	6,0	Piogge estese-40mm alto Tevere, neve/1400m
14	1,0	14,0		Sereno al mattino, nuvoloso da ovest il pomeriggio
15	8,0	12,0	1,0	Piogge sparse, variabile da nord il pomeriggio
16	2,0	13,0		Sereno con moderata tramontana
17	1,0	14,0		Sereno, velato in serata da ovest
18	3,0	8,0	2,0	Da nuvoloso a coperto, piogge in serata-neve/1000m
19	5,0	9,0	8,0	Coperto con piogge nella notte, variabile in giornata
20	4,0	11,0		Variabile da est
21	4,0	12,0	15,0	Da nuv. a coperto da ovest, piogge estese la sera
22	4,0	15,0		Poco nuvoloso, temperature sempre miti
23	3,0	15,0		Nebbia al mattino, sereno durante il giorno
24	7,0	14,0		Da nuvoloso a coperto da ovest
25	9,0	13,0	17,0	Coperto con piogge sparse al mattino, intense la sera
26	8,0	12,0	6,0	Rovesci-temporale la sera, grandine a P. S. Giovanni
27	0,0	13,0		Nebbia in banchi al mattino, poco nuvoloso il pom.
28	1,0	16,0		Nuvoloso, correnti nord occidentali, temperature miti
29				
30				
31				
<b>MED.TOT.</b>	<b>4,0</b>	<b>12,5</b>	<b>123,0</b>	



RIEPILOGO		
GIORNI DI PIOGGIA	11	Mese con precipitazioni superiori alle medie, almeno nell'area perugina. Temperature sempre molto elevate per il periodo.
TEMPERATURE MIN °C	-3,0	
TEMPERATURE MAX °C	16,0	
PIOGGIA MAX 24h (MM)	23,0	