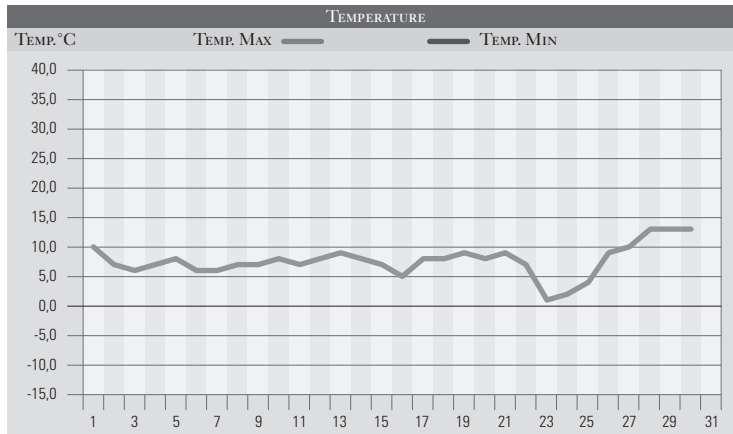


# GENNAIO 2006

GIORNO	T.MIN	T.MAX	PREC.(mm)	OSSERVAZIONI
1	8,0	10,0	24,0	Piogge estese -Tevere in piena
2	8,0	7,0	10,0	Rovesci e neve/500m, temperatura in diminuzione
3	4,0	6,0	5,0	Piogge sparse -neve in Appennino
4	4,0	7,0		Nuvoloso
5	1,0	8,0		Poco nuvoloso
6	-2,0	6,0		Sereno, gelata mattutina
7	-4,0	6,0		Sereno, forte gelata mattutina
8	-1,0	7,0		Variabile da nord
9	1,0	7,0		Sereno con venti deboli orientali
10	0,0	8,0		Sereno
11	-3,0	7,0		Sereno o poco nuvoloso
12	-3,0	8,0		Sereno
13	-2,0	9,0		Sereno
14	-3,0	8,0		Sereno con venti deboli orientali
15	-4,0	7,0		Sereno, forte gelata al mattino
16	-5,0	5,0		Poco nuvoloso
17	2,0	8,0		Nuvoloso, temp in aumento
18	7,0	8,0	7,0	Coperto, piogge sparse
19	-3,0	9,0		Sereno, venti da nord-est
20	-3,0	7,0		Sereno
21	-4,0	9,0		Poco nuvoloso, freddo al mattino
22	2,0	7,0		Poco nuvoloso, diminuzione temp.
23	-1,0	1,0		Poco nuv., debole neve, freddo
24	-2,0	2,0		Sereno, freddo-neve in Appennino
25	-2,0	4,0		Sereno
26	-4,0	9,0		Da nuvoloso a molto nuvoloso
27	1,0	10,0		Coperto da sud-ovest
28	7,0	13,0		Cielo velato, aumento temperature
29	9,0	13,0		Velato da sud-ovest
30	10,0	13,0	1,0	Coperto, pioviggini pomeridiane
31	7,0			Sereno
<b>MED.TOT.</b>	<b>0,8</b>	<b>7,6</b>	<b>47,0</b>	



RIEPILOGO		
GIORNI DI PIOGGIA	5	Mese nella norma.
TEMPERATURE MIN °C	-5,0	
TEMPERATURE MAX °C	13,0	
PIOGGIA MAX 24h (MM)	24,0	