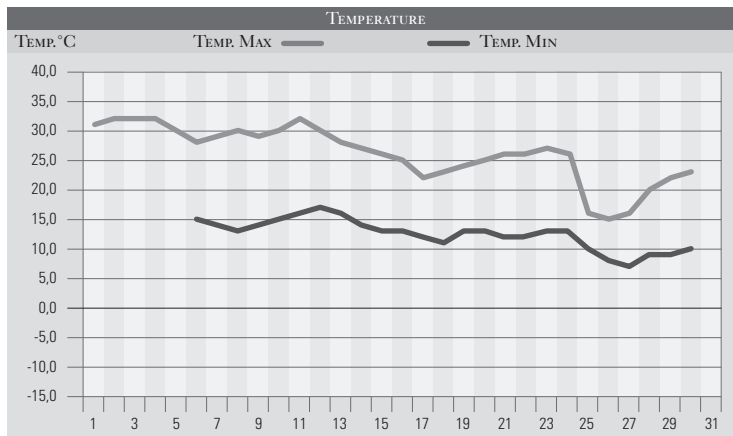


# SETTEMBRE 2004

GIORNO	T.MIN	T.MAX	PREC.(mm)	OSSERVAZIONI
1	16,0	31,0		Poco nuvoloso, rovescio Pantano (PG)
2		32,0		Poco nuvoloso per nubi cumuliformi
3		32,0		Poco nuvoloso per nubi cumuliformi pomeridiane
4		32,0		Poco nuvoloso , tramontana dalla sera
5		30,0		Sereno, cielo terso
6	15,0	28,0		Sereno
7	14,0	29,0		Sereno
8	13,0	30,0		Sereno
9	14,0	29,0		Poco nuvoloso
10	15,0	30,0		Sereno
11	16,0	32,0		Poco nuvoloso, temp. in aumento
12	17,0	30,0		Variabile con isolati rovesci
13	16,0	28,0	5,0	Variabile, piovvaschi in serata
14	14,0	27,0	10,0	Da nuvoloso a coperto, piogge intense
15	13,0	26,0	35,0	Nuvoloso, piogge, ulteriore pegg. sera
16	13,0	25,0	26,0	Piogge forti, dalla notte variabile
17	12,0	22,0	3,0	Coperto con piogge sparse
18	11,0	23,0		Da sereno a poco nuvoloso
19	13,0	24,0		Da poco nuvoloso a sereno
20	13,0	25,0		Variabile, nebbia al mattino
21	12,0	26,0		Poco nuvoloso, nebbia in banchi
22	12,0	26,0		Poco nuvoloso, nebbia al mattino
23	13,0	27,0		Da sereno a poco nuvoloso
24	13,0	26,0	11,0	Nuvoloso, temporali il pom.-colpi di vento
25	10,0	16,0		Nuvoloso, tramontana, temp. in calo
26	8,0	15,0		Sereno, forti venti di tramontana
27	7,0	16,0		Nuvoloso, freddo
28	9,0	20,0		Poco nuvoloso
29	9,0	22,0		Sereno
30	10,0	23,0		Sereno
31				
MED.TOT.	12,6	26,1	90,0	



RIEPILOGO		
GIORNI DI PIOGGIA	6	Si segnala "la rottura dell'estate" avvenuta a metà mese, con piogge abbondanti e un sensibile calo delle temperature.
TEMPERATURE MIN°C	7,0	
TEMPERATURE MAX°C	32,0	
PIOGGIA MAX 24 H (MM)	35,0	