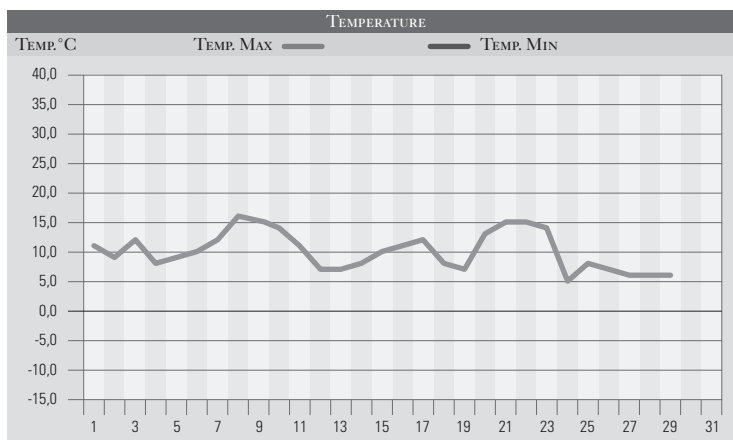


FEBBRAIO 2004

| GIORNO | T.MIN | T.MAX | PREC.(mm) | OSSERVAZIONI |
|-----------------|------------|-------------|--------------|--------------------------------------|
| 1 | -3,0 | 11,0 | | Nubi stratiformi da ovest |
| 2 | 5,0 | 9,0 | | Nuvoloso, aumento delle temperature |
| 3 | 7,0 | 12,0 | | Nuvoloso |
| 4 | 2,0 | 8,0 | | Nebbia alta persistente |
| 5 | 4,0 | 9,0 | | Nebbia alta persistente |
| 6 | 5,0 | 10,0 | | Coperto per nebbie alte |
| 7 | 8,0 | 12,0 | | Coperto per nubi medio-basse |
| 8 | 10,0 | 16,0 | | Da nuvoloso a poco nuv., mite |
| 9 | 3,0 | 15,0 | | Poco nuvoloso |
| 10 | -2,0 | 14,0 | | Sereno |
| 11 | 0,0 | 11,0 | 1,0 | Nuvoloso con piovvaschi dal pom. |
| 12 | 3,0 | 7,0 | | Poco nuvoloso |
| 13 | -1,0 | 7,0 | | Sereno, venti da nord-calo temp. |
| 14 | -1,0 | 8,0 | | Stratificazioni da ovest |
| 15 | 5,0 | 10,0 | | Tempo da ovest |
| 16 | 0,0 | 11,0 | | Poco nuvoloso |
| 17 | -1,0 | 12,0 | | Poco nuvoloso |
| 18 | -4,0 | 8,0 | | Sereno, peggioramento dal pom. |
| 19 | 6,0 | 7,0 | 35,0 | Piogge estese e neve/800m |
| 20 | 6,0 | 13,0 | | Coperto, temp. in aumento |
| 21 | 12,0 | 15,0 | 11,0 | Coperto, piogge e sabbia da sud |
| 22 | 10,0 | 15,0 | 4,0 | Coperto, piogge estese dalla sera |
| 23 | 8,0 | 14,0 | 10,0 | Piogge intermittenti |
| 24 | 6,0 | 5,0 | 12,0 | Nuovo pegg., pioggia e grandinate |
| 25 | 0,0 | 8,0 | 2,0 | Sereno, nuv. con piogge il pom. |
| 26 | 6,0 | 7,0 | 22,0 | Piogge estese e locali temporali |
| 27 | 9,0 | 6,0 | 16,0 | Piogge al mattino, variabile il pom. |
| 28 | 2,0 | 6,0 | 12,0 | Piogge e neve/600-800m, calo temp. |
| 29 | 2,0 | 5,0 | 5,0 | Roveschi, neve a PG la sera-5cm |
| 30 | | | | |
| 31 | | | | |
| MED.TOT. | 3,7 | 10,0 | 130,0 | |



RIEPILOGO

| | | |
|-----------------------|------|--|
| GIORNI DI PIOGGIA | 11 | Mese piovoso soprattutto nell'ultima decade, da sottolineare il clima mite a causa delle correnti prevalentemente sud occidentali. |
| TEMPERATURE MIN °C | -4,0 | |
| TEMPERATURE MAX °C | 16,0 | |
| PIOGGIA MAX 24 H (MM) | 35,0 | |