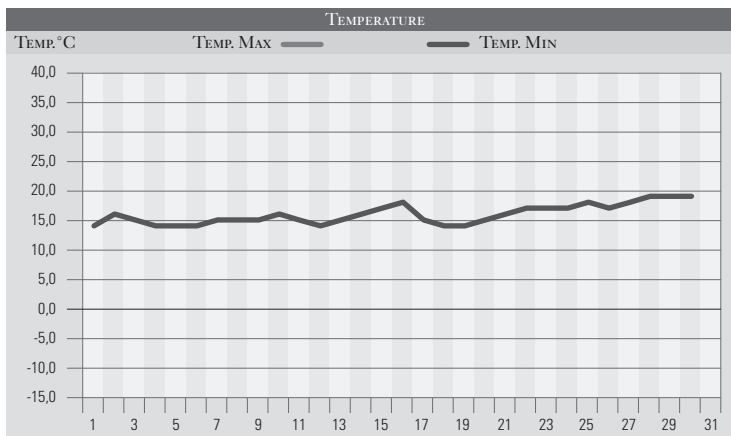


GIUGNO 2001

GIORNO	T.MIN	T.MAX	PREC.(mm)	OSSERVAZIONI
1	14,0	28,0		Sereno
2	16,0	25,0	12,0	Variabile la mattina, temporali sparsi nel pomeriggio
3	15,0	20,0	8,0	Variabile con rovesci sparsi-miglioramento
4	14,0	22,0		Sereno, giornata nitida
5	14,0	26,0		Poco nuvoloso
6	14,0	27,0		Poco nuvoloso da sud
7	15,0	27,0		Sereno
8	15,0	28,0		Sereno
9	15,0	28,0		Poco nuvoloso
10	16,0	27,0		Variabile da sud, velato, pioviggini miste a sabbia
11	15,0	23,0	5,0	Coperto con piogge deboli in mattinata
12	14,0	26,0	1,0	Sereno al mattino, coperto il pom., deboli piogge
13	15,0	25,0		Variabile-temporali nello spoletino e in valnerina
14	16,0	26,0	2,0	Variabile con rovesci sparsi
15	17,0	28,0		Sereno
16	18,0	32,0		Sereno, caldo
17	15,0	20,0	1,0	Rovesci nella notte, sensibile calo della temp.
18	14,0	21,0	2,0	Variabile, rovesci in mattinata, poi sereno
19	14,0	19,0		Variabile da nord, isolati temporali pomeridiani
20	15,0	26,0		Poco nuvoloso
21	16,0	29,0		Sereno
22	17,0	29,0		Poco nuvoloso
23	17,0	32,0		Poco nuvoloso
24	17,0	30,0		Sereno
25	18,0	30,0		Poco nuvoloso
26	17,0	31,0		Da sereno a poco nuvoloso
27	18,0	32,0		Tempo stabile, aumento delle temperature
28	19,0	35,0		Sereno, giornata particolarmente calda
29	19,0	34,0		Tempo stabile per una vasta area di alta pressione
30	19,0	32,0		Tempo stabile, lieve calo termico
31				
Med.Tot.	15,9	27,3	31,0	



RIEPILOGO		
GIORNI DI PIOGGIA	7	Mese con scarse precipitazioni, caldo nell'ultima decade.
TEMPERATURE MIN °C	14,0	
TEMPERATURE MAX °C	35,0	
PIOGGIA MAX 24h (MM)	12,0	