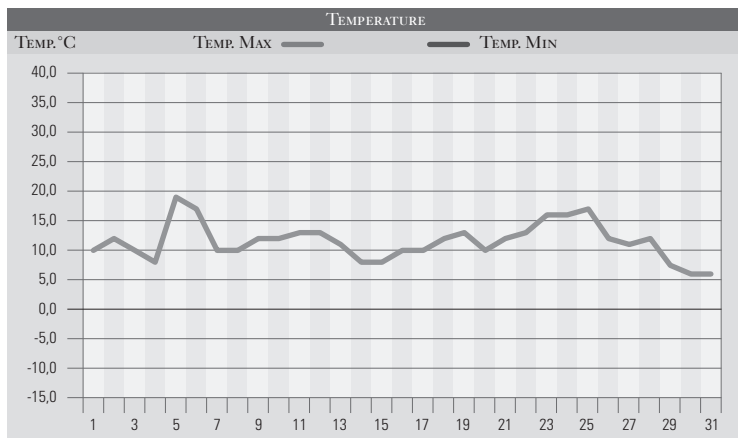


GENNAIO 2001

| GIORNO | T _{MIN} | T _{MAX} | PREC.(mm) | OSSERVAZIONI |
|-----------------|------------------|------------------|-------------|--|
| 1 | -1,0 | 10,0 | | Sereno |
| 2 | -1,0 | 12,0 | | Poco nuvoloso-aumento della nuvolosità |
| 3 | 8,0 | 10,0 | 10,0 | Piogge estese in mattinata, variabile la sera |
| 4 | 3,0 | 8,0 | 22,0 | Nebbia, rapido aumento della nuvolosità-pioggie |
| 5 | 10,0 | 19,0 | | Poco nuvoloso, deciso aumento della temperatura |
| 6 | 12,0 | 18,0 | | Poco nuvoloso, clima mite |
| 7 | 7,0 | 10,0 | 4,0 | Da variabile a coperto con deboli piogge |
| 8 | 6,0 | 10,0 | | Coperto con isolate piogge |
| 9 | 4,0 | 12,0 | | Variabile |
| 10 | 5,0 | 12,0 | | Variabile da sud-ovest, clima mite |
| 11 | 7,0 | 13,0 | | Variabile da sud-ovest, clima mite |
| 12 | 8,0 | 13,0 | 2,0 | Variabile da sud-ovest, isolati piovvaschi |
| 13 | 4,0 | 11,0 | | Variabile, intensi venti da nord-est, calo delle temp. |
| 14 | 4,0 | 8,0 | | Poco nuvoloso, violenti venti settentrionali |
| 15 | 2,0 | 8,0 | | Poco nuvoloso, venti in attenuazione |
| 16 | 0,0 | 10,0 | | Sereno |
| 17 | 3,0 | 10,0 | | Poco nuvoloso |
| 18 | 3,0 | 12,0 | | Poco nuvoloso |
| 19 | 2,0 | 13,0 | | Poco nuvoloso, temperature diurne miti |
| 20 | 3,0 | 10,0 | | Variabile |
| 21 | 2,0 | 12,0 | | Variabile, temperature miti |
| 22 | 2,0 | 14,0 | | Variabile |
| 23 | 10,0 | 16,0 | | Variabile |
| 24 | 8,0 | 16,0 | | Variabile, temperature miti |
| 25 | 8,0 | 17,0 | | Variabile, temperature sopra le medie |
| 26 | 4,0 | 12,0 | 5,0 | Variabile, peggioramento da ovest, piogge |
| 27 | 3,0 | 11,0 | 5,0 | Coperto con deboli piogge |
| 28 | 7,0 | 12,0 | 10,0 | Variabile, aumento delle nubi, piogge dalla sera |
| 29 | 8,0 | 8,0 | 25,0 | Coperto, piogge estese e neve/1400m |
| 30 | 6,0 | 6,0 | 15,0 | Coperto, piogge estese e neve/700m-miglioramento |
| 31 | 5,0 | 6,0 | | Variabile da nord |
| MED.TOT. | 4,9 | 11,6 | 98,0 | |



RIEPILOGO

| | | |
|-----------------------|------|---|
| GIORNI DI PIOGGIA | 9 | Mese particolarmente mite con una discreta piovosità. |
| TEMPERATURE MIN °C | -1,0 | |
| TEMPERATURE MAX °C | 19,0 | |
| PIOGGIA MAX 24 H (MM) | 25,0 | |