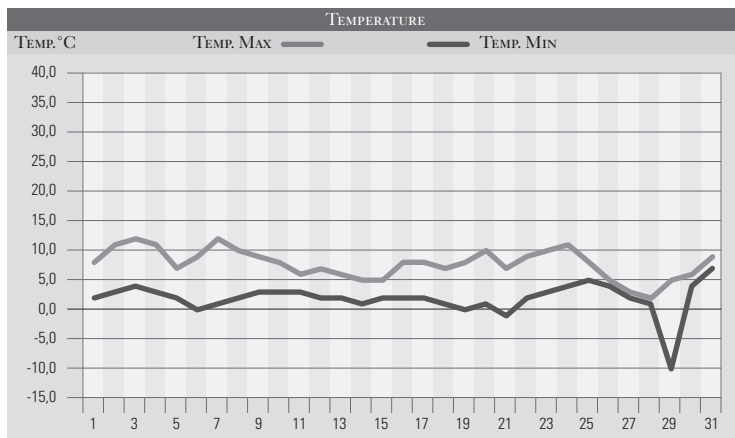


GENNAIO 1976

GIORNO	T.MIN	T.MAX	PREC.(mm)	OSSERVAZIONI
1	2,0	8,0		Bel tempo, regna l'alta pressione
2	3,0	11,0		Nuvoloso, pressione in ulteriore aumento
3	4,0	12,0		Variabile
4	3,0	11,0		Sereno
5	2,0	7,0		Poco nuvoloso
6	0,0	9,0		Variabile
7	1,0	12,0		Sereno, alta pressione in aumento
8	2,0	10,0		Sereno, nebbia al mattino
9	3,0	9,0		Sereno, nebbia al mattino
10	3,0	8,0		Sereno
11	3,0	6,0		Nebbia persistente
12	2,0	7,0		Sereno al centro di Perugia, nebbia persistente a valle
13	2,0	6,0		Nebbia persistente
14	1,0	5,0		Nebbia persistente
15	2,0	5,0		Nebbia persistente
16	2,0	8,0		Nebbia persistente
17	2,0	8,0		Nebbia persistente
18	1,0	7,0		Leggera tramontana spazza via la nebbia
19	0,0	8,0		Sereno
20	1,0	10,0		Variabile da ovest
21	-1,0	7,0		Sereno
22	2,0	9,0		Poco nuvoloso da nord-ovest
23	3,0	10,0		Variabile
24	4,0	11,0		Poco nuvoloso
25	5,0	8,0		Molto nuvoloso, peggioramento
26	4,0	5,0	7,0	Coperto, pioggia moderata
27	2,0	3,0	1,0	Variabile, neve anche in pianura (2cm)
28	1,0	2,0		Poco nuvoloso-sereno
29	-10,0	5,0		Forte gelata da record in pianura, nuvoloso in serata
30	4,0	6,0	23,0	Coperto, pioggia estesa, neve/600m
31	7,0	9,0		Coperto, piovvaschi, neve in montagna
MED.TOT.	1,9	7,8	31,0	



RIEPILOGO		
GIORNI DI PIOGGIA	3	Mese siccitoso e caldo in particolare nella prima decade. Poi le nebbie sono state le assolute protagoniste fin quasi alla fine del mese, quando un'ondata di freddo ha messo in moto l'atmosfera e riportato qualche pioggia anche con la comparsa della neve.
TEMPERATURE MIN °C	-10,0	
TEMPERATURE MAX °C	12,0	
PIOGGIA MAX 24H (MM)	23,0	