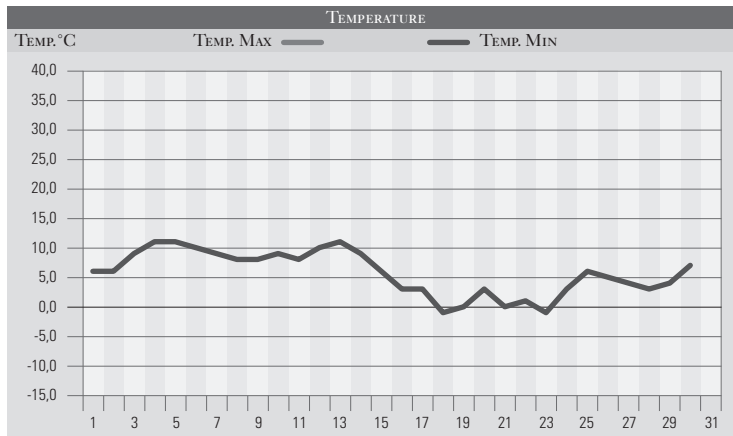


NOVEMBRE 1998

GIORNO	T.MIN	T.MAX	PREC.(mm)	OSSERVAZIONI
1	6,0	16,0		Poco nuvoloso
2	6,0	15,0		Variabile
3	9,0	13,0		Variabile da ovest, isolati piovaschi
4	11,0	13,0		Variabilità perturbata da sud-ovest
5	11,0	12,0	35,0	Coperto, piogge intense dalla mattinata
6	10,0	14,0	5,0	Residue piogge sparse, variabilità in giornata
7	9,0	15,0		Da variabile a sereno
8	8,0	16,0		Sereno
9	8,0	14,0		Da sereno a coperto
10	9,0	13,0		Nebbia in mattinata, coperto nel pomeriggio
11	8,0	12,0	22,0	Piogge sparse
12	10,0	14,0		Variabile
13	11,0	15,0		Poco nuvoloso
14	9,0	12,0	2,0	Coperto, isolati piovaschi
15	6,0	13,0		Poco nuvoloso
16	3,0	8,0	1,0	Variabile da nord, piovaschi e deboli nevicate/600m
17	3,0	8,0		Sereno con tramontana, temperatura rigida
18	-1,0	9,0		Sereno con debole brinata
19	0,0	7,0		Variabile, rovesci nevosi a quote basse, tramontana
20	3,0	5,0		Variabile, debole nevicata in mattinata, tramontana
21	0,0	1,0		Coperto, molto freddo, tramontana-neve Appennino
22	1,0	5,0		Variabile da nord
23	-1,0	9,0		Variabile, freddo al mattino
24	3,0	11,0		Sereno, temperature in lieve aumento
25	6,0	12,0		Sereno
26	5,0	12,0		Sereno
27	4,0	13,0		Poco nuvoloso
28	3,0	12,0		Poco nuvoloso, peggioramento da ovest
29	4,0	12,0		Poco nuvoloso
30	7,0	12,0		Variabile con piovaschi dalla sera
31				
MED.TOT.	5,7	11,4	65,0	



RIEPILOGO

GIORNI DI PIOGGIA	5	Mese autunnale caratterizzato da scarse precipitazioni rispetto alle attese. Episodio di freddo tra la seconda e terza decade con abbondanti nevicate in Appennino.
TEMPERATURE MIN °C	-1,0	
TEMPERATURE MAX °C	16,0	
PIOGGIA MAX 24h (MM)	35,0	