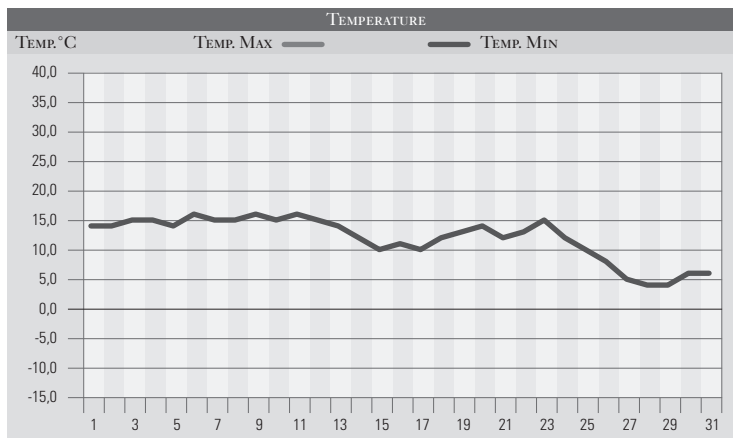


# OTTOBRE 1997

GIORNO	T.MIN	T.MAX	PREC.(mm)	OSSERVAZIONI
1	14,0	22,0		Sereno
2	14,0	23,0		Sereno
3	15,0	21,0		Poco nuvoloso
4	15,0	21,0		Variabile
5	14,0	20,0		Da variabile a nuvoloso
6	16,0	21,0		Nuvoloso, temperature elevate
7	15,0	21,0		Nuvoloso
8	15,0	22,0		Velato
9	16,0	23,0		Poco nuvoloso, venti deboli meridionali
10	15,0	22,0		Poco nuvoloso
11	16,0	21,0		Variabile da nord-ovest
12	15,0	23,0		Poco nuvoloso, tendenza a peggioramento
13	14,0	15,0	15,0	Nuvoloso con temporali pomeridiani
14	12,0	16,0		Nuvoloso
15	10,0	18,0		Sereno
16	11,0	19,0		Sereno
17	10,0	21,0		Velato
18	12,0	22,0		Velato
19	13,0	23,0		Sereno, temperature elevate per il periodo
20	14,0	21,0		Sereno
21	12,0	20,0		Poco nuvoloso
22	13,0	20,0		Cielo sereno
23	15,0	19,0		Sereno, aumento della nuvolosità da ovest
24	12,0	16,0	20,0	Coperto con piogge estese ed intense
25	10,0	14,0		Poco nuvoloso
26	8,0	12,0		Sereno, temperature in diminuzione
27	5,0	7,0		Poco nuv., forte tramontana-neve in Appennino
28	4,0	7,0		Poco nuv., freddo, tramontana a 100hm orari
29	4,0	6,0		Poco nuvoloso, venti in attenuazione, freddo
30	6,0	10,0		Poco nuvoloso
31	6,0	14,0		Sereno
<b>MED.TOT.</b>	<b>12,0</b>	<b>18,1</b>	<b>35,0</b>	



RIEPILOGO		
GIORNI DI PIOGGIA	2	Mese con precipitazioni molto al di sotto delle attese. Di
TEMPERATURE MIN °C	4,0	rilievo l'irruzione fredda a fine mese che ha portato un
TEMPERATURE MAX °C	23,0	repentino calo delle temperature e le prime nevicate in
PIOGGIA MAX 24 H (MM)	75,0	Appennino.