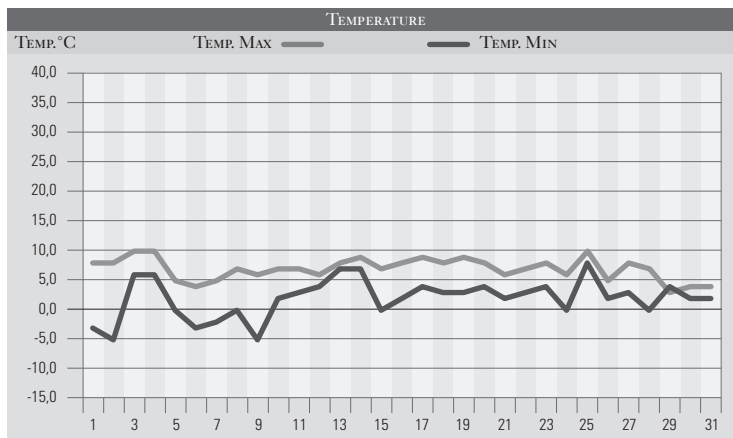


GENNAIO 1978

GIORNO	T.MIN	T.MAX	PREC.(mm)	OSSERVAZIONI
1	-3,0	8,0		Sereno, freddo, gelate
2	-5,0	8,0		Sereno
3	6,0	10,0		Nuvoloso, correnti da ovest aumento delle temperature
4	6,0	10,0		Nuvolosità da scorrimento
5	0,0	5,0		Forti venti da nord, freddo
6	-3,0	4,0		Sereno, freddo intenso e qualche nevicata sui rilievi
7	-2,0	5,0		Sereno, tramontana
8	0,0	7,0		Sereno
9	-5,0	6,0		Sereno, forte gelata
10	2,0	7,0		Coperto
11	3,0	7,0	10,0	Coperto, piogge deboli
12	4,0	6,0	23,0	Molto nuvoloso, piogge via via più estese
13	7,0	8,0		Molto nuvoloso
14	7,0	9,0	8,0	Molto nuvoloso, piogge dalla sera
15	0,0	7,0		Sereno variabile
16	2,0	8,0		Sereno, nuvoloso in serata
17	4,0	9,0		Coperto variabile dal pomeriggio
18	3,0	8,0		Variabile
19	3,0	9,0		Variabile
20	4,0	8,0	3,0	Nuvoloso, variabile, piogge sparse
21	2,0	6,0		Nuvoloso, temperature in diminuz., neve/800m
22	3,0	7,0		Variabile
23	4,0	8,0		Poco nuvoloso
24	0,0	6,0	6,0	Coperto, piogge in serata neve/1200m
25	8,0	10,0		Variabile-sereno
26	2,0	5,0		Molto nuvoloso, piogge sparse
27	3,0	8,0		Sereno-poco nuvoloso
28	0,0	7,0	4,0	Coperto, piogge (forti a nord-ovest reg.) venti forti da sud
29	4,0	3,0	24,0	Coperto piogge e neve/500-300m (piena del Tevere)
30	2,0	4,0	2,0	Nuvoloso, piovvaschi, il Tevere esonda (C. Castello-Deruta)
31	2,0	4,0		Nuvoloso-poco nuvoloso
MED.TOT.	2,0	7,0	80,0	



RIEPILOGO		
GIORNI DI PIOGGIA	8	Un mese di gennaio quasi nella norma con precipitazioni però superiori alle medie, soprattutto negli ultimi giorni del mese, quando in molte zone dell'alto Tevere, si sono superati i 50-70mm in 24 ore.
TEMPERATURE MIN °C	5,0	
TEMPERATURE MAX °C	10,0	
PIOGGIA MAX 24 H (MM)	24,0	