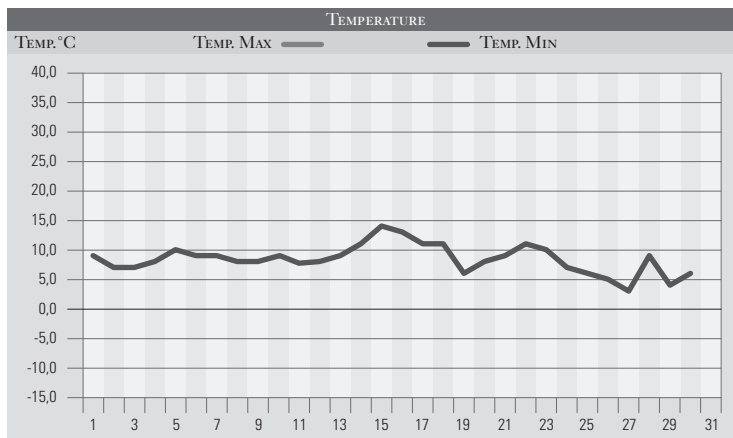


NOVEMBRE 1996

GIORNO	T.MIN	T.MAX	PREC.(mm)	OSSERVAZIONI
1	9,0	16,0		Poco nuvoloso, clima mite
2	7,0	16,0		Sereno, pressione alta e livellata
3	7,0	18,0		Sereno
4	8,0	19,0		Sereno, temperature elevate
5	10,0	17,0		Poco nuvoloso
6	9,0	16,0		Poco nuvoloso
7	9,0	16,0		Da variabile a sereno
8	8,0	15,0		Sereno
9	8,0	16,0		Sereno
10	9,0	16,0		Variabile per un debole peggioramento
11	8,0	15,0		Poco nuvoloso
12	8,0	16,0		Sereno
13	9,0	17,0		Sereno, caldo per il periodo
14	11,0	18,0		Sereno
15	14,0	22,0		Sereno, tendenza a peggioramento da sud-ovest
16	13,0	19,0	2,0	Da nuvoloso a coperto, piogge dalla sera
17	11,0	12,0	74,0	Piogge torrenziali ed estese-alluvione nord reg.
18	11,0	14,0	20,0	Variabile, piogge dalla sera-forte piena del Tevere
19	6,0	8,0	12,0	Piogge estese in mattinata e neve/1400m
20	8,0	9,0	32,0	Coperto con intense piogge, venti da sud
21	9,0	13,0		Poco nuvoloso per temporaneo miglioramento
22	11,0	15,0	10,0	Coperto con piogge in intensificazione
23	10,0	11,0	10,0	Variabile, peggioramento con piogge in serata
24	7,0	8,0		Nuvoloso da nord, temperature in diminuzione
25	6,0	11,0	26,0	Nuvoloso, piogge abbondanti ed estese
26	5,0	12,0		Poco nuvoloso
27	3,0	14,0		Poco nuvoloso, peggioramento in serata
28	9,0	10,0	3,0	Coperto con deboli piogge in mattinata
29	4,0	12,0		Variabile
30	6,0	5,0	18,0	Piogge estese, temperature in calo e neve/ 900m
31				
MED.TOT.	8,4	14,2	207,0	



RIEPILOGO		
GIORNI DI PIOGGIA	10	Mese autunnale caratterizzato da due metà ben distinte: la prima mite e seccitosa, la seconda molto piovosa, tanto che in 15 giorni le piogge hanno cumulato 207mm, quasi il doppio della media mensile.
TEMPERATURE MIN°C	3,0	
TEMPERATURE MAX°C	22,0	
PIOGGIA MAX 24 H(MM)	74,0	