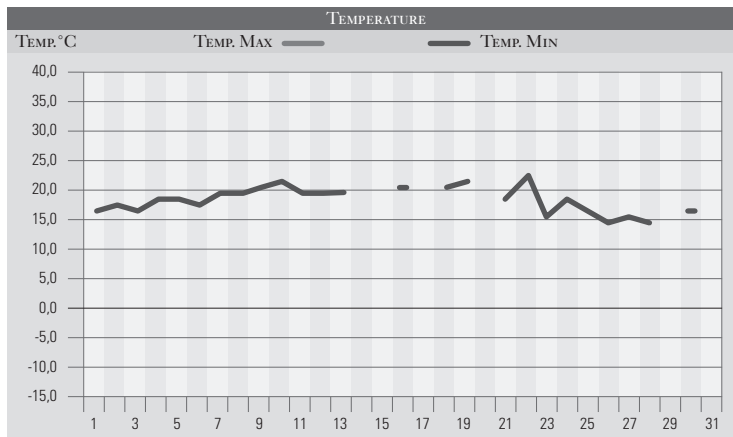


GIUGNO 1996

GIORNO	T.MIN	T.MAX	PREC.(mm)	OSSERVAZIONI
1	16,0	29,0		Sereno, sviluppo di nubi cumuliformi il pomeriggio
2	17,0	29,0		Sereno
3	16,0	30,0		Poco nuvoloso
4	18,0	32,0		Variabile da sud-ovest, caldo
5	18,0	33,0		Sereno, caldo
6	17,0	33,0		Poco nuvoloso
7	19,0	32,0		Variabile
8	19,0	34,0		Poco nuvoloso
9	20,0	34,0		Sereno, attività cumuliforme a ridosso dei rilievi
10	21,0	35,0		Sereno, caldo intenso
11	19,0	33,0		Sereno, caldo intenso
12	19,0	32,0		Poco nuvoloso
13	19,0	33,0		Sereno
14		34,0		Sereno, temperature sempre molto elevate
15		34,0		Poco nuvoloso per attività cumuliforme
16	20,0	34,0		Sereno
17		33,0		Sereno
18	20,0	35,0		Sereno
19	21,0	35,0		Sereno, temp. elevate (alluvione in Versilia)
20		33,0		Poco nuvoloso
21	18,0	32,0		Velature, preludio ad un peggioramento
22	22,0	30,0	10,0	Coperto con rovesci
23	15,0	27,0		Variabile, temperature in diminuzione
24	18,0	22,0	28,0	Nuvoloso, piogge intense in serata
25	16,0	21,0	15,0	Nuvoloso, forte temporale nel pomeriggio
26	14,0	23,0		Poco nuvoloso
27	15,0	24,0		Poco nuvoloso
28	14,0	24,0		Sereno, temperature gradevoli per venti orientali
29		26,0		Sereno, visibilità ottima
30	16,0	28,0		Sereno
31				
MED.TOT.	17,3	30,5	53,0	



RIEPILOGO		
GIORNI DI PIOGGIA	3	Mese con temperature massime costantemente sopra la media nelle prime 2 decadi; nella norma l'ultima decade.
TEMPERATURE MIN °C	14,0	
TEMPERATURE MAX °C	35,0	
PIOGGIA MAX 24 H (MM)	28,0	