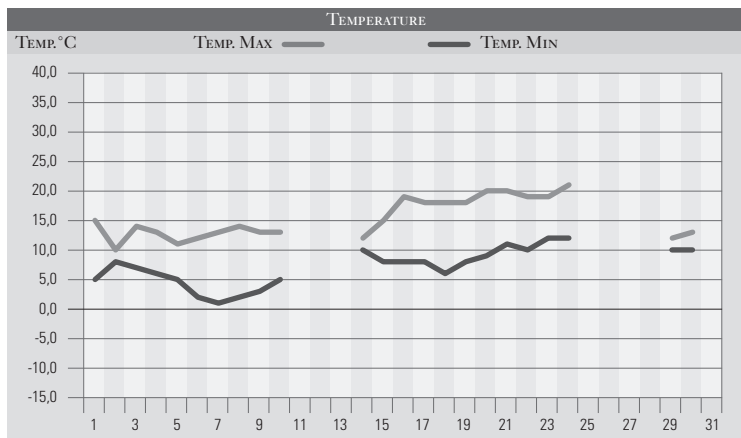


APRILE 1996

GIORNO	T.MIN	T.MAX	PREC.(mm)	OSSERVAZIONI
1	5,0	15,0		Da poco nuvoloso a coperto da sud-ovest
2	8,0	10,0	30,0	Coperto, piogge e temporali, venti forti da sud-ovest
3	7,0	14,0		Variabile, venti moderati da sud-ovest
4	6,0	13,0		Variabile da sud-ovest
5	5,0	11,0	1,0	Coperto con isolate pioviggini
6	2,0	12,0		Poco nuvoloso
7	1,0	13,0		Poco nuvoloso
8	2,0	14,0		Sereno
9	3,0	13,0		Variabile
10	5,0	13,0		Poco nuvoloso
11				Nuvoloso
12				Nuvoloso
13				Da nuvoloso a coperto
14	10,0	12,0	14,0	Coperto con piogge estese, miglioramento la sera
15	8,0	15,0		Poco nuvoloso
16	8,0	19,0		Sereno, temperature miti
17	8,0	18,0		Sereno
18	6,0	18,0		Sereno
19	8,0	18,0		Variabile
20	9,0	20,0		Sereno
21	11,0	20,0		Sereno
22	10,0	19,0		Poco nuvoloso
23	12,0	19,0		Variabile da sud, venti deboli di scirocco
24	12,0	21,0		Variabile da sud
25				Poco nuvoloso
26				Sereno, poco nuvoloso
27				Poco nuvoloso
28				Variabile, peggioramento in serata
29	10,0	12,0	20,0	Coperto con piogge anche intense
30	10,0	13,0	14,0	Coperto con piogge sparse, localmente intense
31				
MED.TOT.	7,2	15,3	79,0	



RIEPILOGO		
GIORNI DI PIOGGIA	5	Mese nella norma.
TEMPERATURE MIN °C	1,0	
TEMPERATURE MAX °C	21,0	
PIOGGIA MAX 24 H (MM)	30,0	