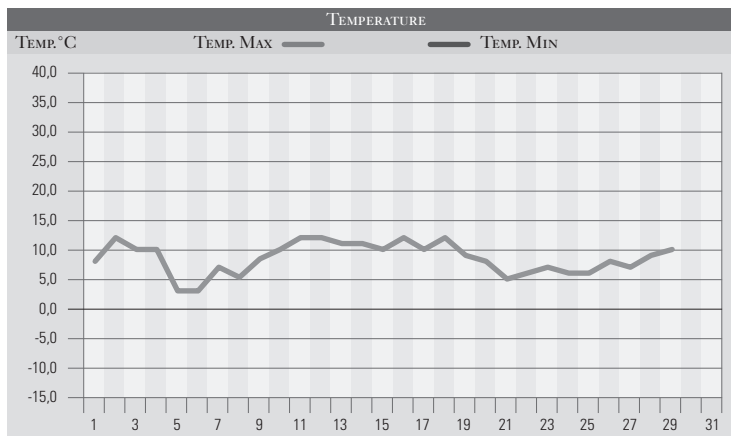


FEBBRAIO 1996

GIORNO	T.MIN	T.MAX	PREC.(mm)	OSSERVAZIONI
1	2,0	8,0		Variabile, venti da sud-ovest, temp. in aumento
2	8,0	12,0	3,0	Coperto dalla serata con piogge
3	6,0	10,0	19,0	Coperto con piogge estese
4	8,0	10,0	18,0	Nuvoloso, rovesci sparsi
5	7,0	3,0	10,0	Coperto, piogge e tramontana, temp. in calo
6	0,0	3,0		Neve nella notte/400m (2cm a PG. centro sereno)
7	-1,0	7,0		Sereno
8	0,0	5,0		Sereno
9	0,0	8,0		Poco nuvoloso
10	1,0	10,0		Poco nuvoloso, tendenza a coperture da ovest
11	2,0	12,0	1,0	Coperto con deboli pioviggini, temp. in aumento
12	6,0	12,0		Variabile
13	7,0	11,0	12,0	Piogge dalla notte da ovest neve/1300m
14	4,0	11,0		Variabile
15	5,0	10,0		Variabile
16	6,0	12,0		Sereno, ventilazione assente
17	5,0	10,0		Poco nuvoloso
18	7,0	12,0		Variabile con aumento della nuvolosità in serata
19	8,0	9,0	14,0	Forti venti da sud, piogge estese e neve/1000m
20	4,0	8,0	4,0	Residue precipitazioni-nuovo pegg. dalla sera
21	2,0	5,0	10,0	Piogge e temporali temp. in calo e neve/600m
22	1,0	6,0	3,0	Coperto, piogge a neve/300m (5cm a PG centro)
23	0,0	7,0		Variabile da nord
24	-1,0	6,0		Variabile da nord, temperature in diminuzione
25	0,0	6,0		Sereno
26	-1,0	8,0		Sereno, freddo di primo mattino
27	-2,0	7,0		Sereno
28	-2,0	9,0		Sereno
29	-1,0	10,0		Sereno, pressione alta e livellata
30				
31				
MED.TOT.	2,3	8,1	94,0	



RIEPILOGO		
GIORNI DI PIOGGIA	10	Mese invernale con temperature nella media, precipitazioni ben distribuite e superiori alle attese.
TEMPERATURE MIN °C	-2,0	
TEMPERATURE MAX °C	12,0	
PIOGGIA MAX 24 H (MM)	19,0	