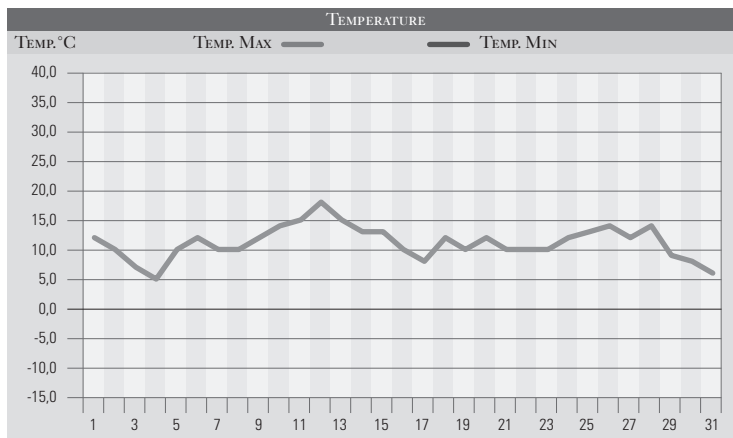


GENNAIO 1996

GIORNO	T.MIN	T.MAX	PREC.(mm)	OSSERVAZIONI
1	7,0	12,0	5,0	Piogge nella notte-Tevere in piena
2	8,0	10,0	2,0	Piogge sparse, calo termico
3	1,0	7,0		Sereno
4	-2,0	5,0		Sereno
5	3,0	10,0		Da sereno a coperto da sud-ovest
6	7,0	12,0	3,0	Coperto con deboli piogge, temp. in aumento
7	7,0	10,0	5,0	Coperto con deboli piogge
8	8,0	10,0	21,0	Forti piogge, variabilità a seguire, mite
9	4,0	12,0		Sereno
10	3,0	14,0		Sereno
11	4,0	15,0		Poco nuvoloso
12	5,0	18,0		Poco nuvoloso
13	5,0	15,0		Poco nuvoloso
14	3,0	13,0		Da poco nuvoloso a sereno
15	0,0	13,0		Sereno con venti moderati da nord-est, calo temp.
16	-2,0	10,0		Sereno, temperatura in ulteriore diminuzione
17	-1,0	8,0		Sereno
18	-1,0	12,0		Variabile con venti deboli occidentali
19	5,0	10,0		Variabile, temperature in aumento
20	7,0	12,0	3,0	Coperto con piogge sparse
21	5,0	10,0		Variabile
22	3,0	10,0		Nebbia in diradamento durante la giornata
23	2,0	10,0		Da poco nuvoloso a coperto
24	7,0	12,0	18,0	Coperto con piogge estese
25	6,0	13,0		Variabile con temperature miti
26	4,0	14,0		Variabile con temperature miti per il periodo
27	3,0	12,0		Variabile
28	4,0	15,0		Nebbia al mattino, poi sereno
29	3,0	9,0		Variabile con temperature miti
30	3,0	8,0		Sereno con deboli venti da nord-est
31	2,0	6,0		Sereno, tramontana in aumento, temp. in calo
MED.TOT.	3,6	11,2	57,0	



RIEPILOGO

GIORNI DI PIOGGIA	7	Mese mite con temperature al di sopra della media, nella norma le precipitazioni.
TEMPERATURE MIN °C	-2,0	
TEMPERATURE MAX °C	18,0	
PIOGGIA MAX 24 H (MM)	21,0	