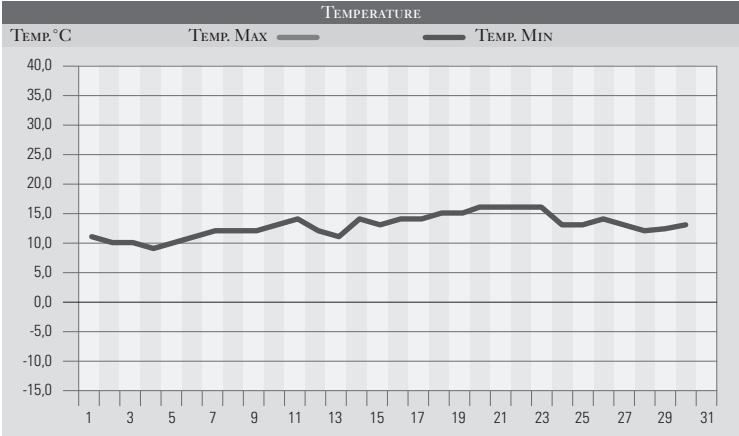


GIUGNO 1995

GIORNO	T.MIN	T.MAX	PREC.(mm)	OSSERVAZIONI
1	11,0	24,0	13,0	Rovesci sparsi al pomeriggio
2	10,0	19,0		Sereno
3	10,0	17,0		Sereno o poco nuvoloso
4	9,0	18,0		Nuvoloso con qualche rovescio
5	10,0	19,0		Variabile, fresco
6	11,0	15,0	10,0	Temporalì al pomeriggio anche estesi, freddo
7	12,0	19,0		Variabile, fresco
8	12,0	20,0		Poco nuvoloso
9	12,0	26,0		Sereno
10	13,0	25,0		Variabile
11	14,0	20,0	15,0	Al mattino piogge estese, al pomeriggio temporalì
12	12,0	18,0	10,0	Al mattino piogge estese di breve durata
13	11,0	24,0		Sereno
14	14,0	26,0		Sereno o poco nuvoloso
15	13,0	29,0		Sereno
16	14,0	30,0		Sereno, caldo in aumento
17	14,0	31,0		Sereno
18	15,0	31,0		Sereno o poco nuvoloso
19	15,0	30,0		Sereno
20	16,0	32,0		Sereno, caldo e pressione in aumento
21	16,0	31,0		Sereno o poco nuvoloso
22	16,0	32,0		Sereno o poco nuvoloso
23	16,0	28,0	26,0	Coperto, temporale, pioggia torrenziale
24	13,0	26,0		Variabile
25	13,0	25,0		Da variabile a nuvoloso
26	14,0	26,0		Variabile
27	13,0	24,0		Poco nuvoloso
28	12,0	25,0		Sereno o poco nuvoloso
29	12,0	26,0		Sereno
30	13,0	27,0		Sereno o poco nuvoloso
31				
MED.TOT.	12,8	24,7	74,0	



RIEPILOGO		
GIORNI DI PIOGGIA	5	Precipitazioni al di sopra delle medie nel primo mese estivo, con temperature in aumento dall'inizio della seconda decade, sicuramente la più calda di giugno.
TEMPERATURE MIN °C	9,0	
TEMPERATURE MAX °C	32,0	
PIOGGIA MAX 24h (mm)	26,0	