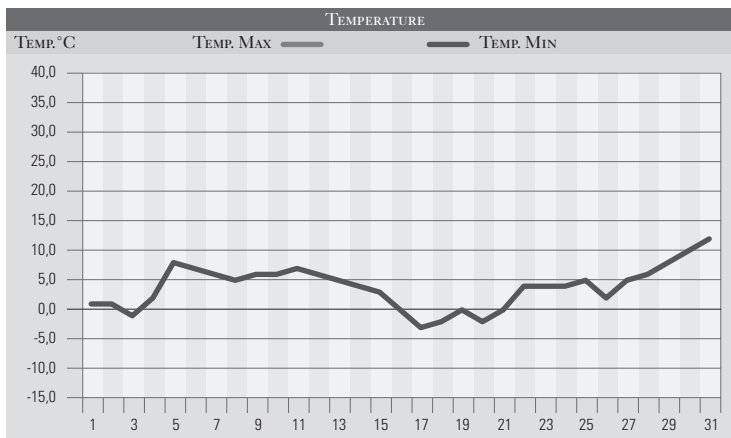


DICEMBRE 1994

GIORNO	T.MIN	T.MAX	PREC.(mm)	OSSERVAZIONI
1	1,0	13,0		Sereno
2	1,0	12,0		Sereno o poco nuvoloso
3	-1,0	13,0		Brina al mattino, sereno
4	2,0	12,0		Sereno, siccità grave
5	8,0	15,0		Sereno, temperature in aumento
6	7,0	14,0		Sereno
7	6,0	13,0		Sereno o poco nuvoloso
8	5,0	10,0		Sereno
9	6,0	11,0	13,0	Deboli precipitazioni al mattino, piogge al pom.
10	6,0	14,0		Sereno o poco nuvoloso
11	7,0	12,0		Sereno
12	6,0	13,0		Sereno o poco nuvoloso
13	5,0	14,0		Nuvoloso
14	4,0	16,0		Nuvoloso, tendenza a diminuzione delle temp.
15	3,0	10,0		Variabile
16	0,0	10,0		Brina al mattino, sereno
17	-3,0	8,0		Gelate al mattino, sereno
18	-2,0	8,0		Brinate al mattino, sereno
19	0,0	10,0		Sereno, brinate
20	-2,0	10,0		Gelate al mattino, sereno
21	0,0	9,0		Sereno brinate
22	4,0	8,0		Nuvolosità variabile, specie al pomeriggio
23	4,0	6,0	2,0	Pioggia e neve sull'Appennino/800m
24	4,0	5,0	5,0	Pioggia e neve sull'Appennino/800m
25	5,0	8,0	3,0	Variabile con piovvaschi sparsi
26	2,0	6,0		Nebbia, poco nuvoloso
27	5,0	10,0		Nebbia, poco nuvoloso, temperatura in aumento
28	6,0	12,0		Variabile
29	8,0	12,0		Sereno, temperature in aumento
30	10,0	15,0		Sereno, caldo
31	12,0	18,0		Caldo per forte scirocco
MED.TOT.	3,8	11,2	23,0	



RIEPILOGO		
GIORNI DI PIOGGIA	4	Mese caldo e siccitoso, con temperature sempre o quasi al di sopra delle medie tranne per una breve pausa fredda nella seconda decade. Frequenti alte pressioni subtropicali.
TEMPERATURE MIN °C	-3,0	
TEMPERATURE MAX °C	18,0	
PIOGGIA MAX 24h (MM)	13,0	