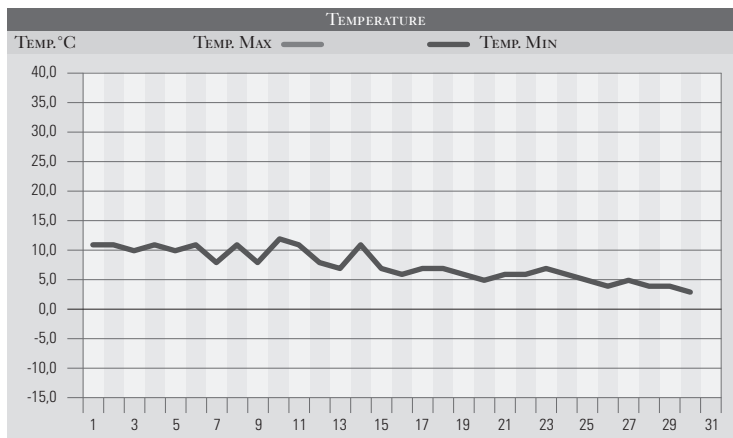


NOVEMBRE 1994

GIORNO	T.MIN	T.MAX	PREC.(mm)	OSSERVAZIONI
1	11,0	20,0		Sereno, caldo
2	11,0	20,0		Sereno
3	10,0	20,0		Sereno o poco nuvoloso
4	11,0	22,0		Sereno
5	10,0	23,0		Sereno temperature al di sopra delle medie
6	11,0	15,0	23,0	Piogge estese in mattinata, temporali alla sera
7	8,0	16,0		Variabile
8	11,0	17,0	9,0	Piogge in mattinata, poi variabile,
9	8,0	16,0		Variabile
10	12,0	17,0	18,0	Piogge sparse, temporali al pomeriggio
11	11,0	15,0	4,0	Roveschi sparsi anche forti
12	8,0	13,0		Variabile nebbioso
13	7,0	14,0		Nebbio al mattino poi variabile
14	11,0	13,0		Nebbia al mattino poi sereno
15	7,0	14,0		Variabile nebbioso
16	6,0	13,0		Nebbia al mattino poi sereno
17	7,0	14,0	3,0	Coperto in mattinata con brevi piogge
18	7,0	15,0		Variabile
19	6,0	16,0		Sereno, alta pressione subtropicale
20	5,0	16,0		Sereno
21	6,0	17,0		Sereno o poco nuvoloso
22	6,0	18,0		Sereno
23	7,0	17,0		Sereno
24	6,0	18,0		Sereno o poco nuvoloso
25	5,0	15,0		Sereno, alta pressione in calo
26	4,0	16,0		Sereno
27	5,0	13,0		Sereno, diminuzione delle temperature
28	4,0	14,0		Sereno o poco nuvoloso
29	4,0	13,0		Sereno
30	3,0	12,0		Sereno o poco nuvoloso
31				
MED.TOT.	7,6	16,1	57,0	



RIEPILOGO		
GIORNI DI PIOGGIA	5	Mese dominato dalle alte pressioni subtropicali e quindi caratterizzato da lunghi periodi caldi e stabili intervallati da rare occasioni per precipitazioni, sicuramente al di sotto delle medie.
TEMPERATURE MIN °C	3,0	
TEMPERATURE MAX °C	23,0	
PIOGGIA MAX 24 H (MM)	23,0	