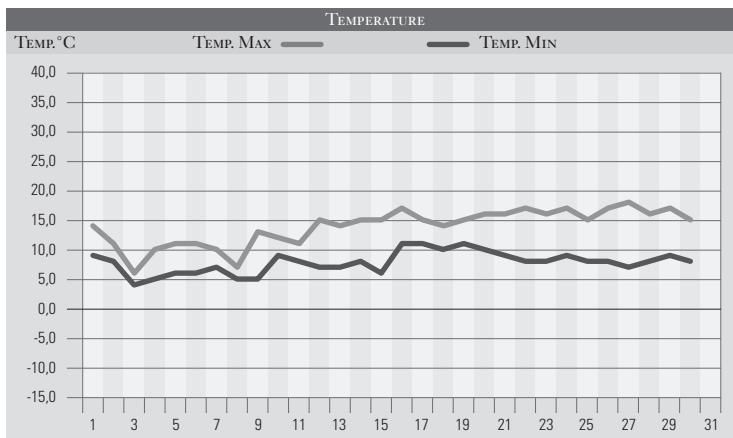


APRILE 1994

GIORNO	T.MIN	T.MAX	PREC.(mm)	OSSERVAZIONI
1	9,0	14,0	1,0	Lieve peggioramento del tempo, piogge deboli
2	8,0	11,0	5,0	Pioggia e vento nella notte, neve/1000m
3	4,0	6,0	10,0	Coperto con piogge estese, neve/900m
4	5,0	10,0		Sereno
5	6,0	11,0		Coperto con deboli piovaschi
6	6,0	11,0		Variabile
7	7,0	10,0	8,0	Peggioramento da ovest, piogge in serata
8	5,0	7,0		Coperto, piogge sparse ad est e nord-est, neve/800m
9	5,0	13,0		Sereno, dal pomeriggio peggioramento
10	9,0	12,0	4,0	Coperto con piogge, solo dal pomeriggio su PG
11	8,0	11,0	4,0	Da variabile a coperto con piogge, neve/1000m
12	7,0	15,0		Molto nuvoloso
13	7,0	14,0		Variabile
14	8,0	15,0		Nuvolosità Variabile
15	6,0	15,0		Variabile, poi cielo coperto africano
16	11,0	17,0	3,0	Piogge africane con sabbia
17	11,0	15,0	22,0	Piogge a tratti torrenziali
18	10,0	14,0	12,0	Coperto con rovesci e piovaschi sparsi
19	11,0	15,0		Sereno
20	10,0	16,0		Sereno o poco nuvoloso
21	9,0	16,0		Sereno
22	8,0	17,0		Sereno o poco nuvoloso
23	8,0	16,0		Sereno
24	9,0	17,0		Sereno peggioramento
25	8,0	15,0	1,0	Piogge deboli sparse dalla mattinata
26	8,0	17,0		Sereno
27	7,0	18,0		Sereno o poco nuvoloso
28	8,0	16,0		Sereno o poco nuvoloso
29	9,0	17,0		Sereno
30	8,0	15,0		Sereno o poco nuvoloso
31				
MED.TOT.	7,8	13,9	70,0	



RIEPILOGO		
GIORNI DI PIOGGIA	10	Il mese si presenta con precipitazioni leggermente al di sotto delle medie e con temperature sostanzialmente in linea o leggermente superiori alla norma.
TEMPERATURE MIN °C	4,0	
TEMPERATURE MAX °C	18,0	
PIOGGIA MAX 24h (MM)	22,0	