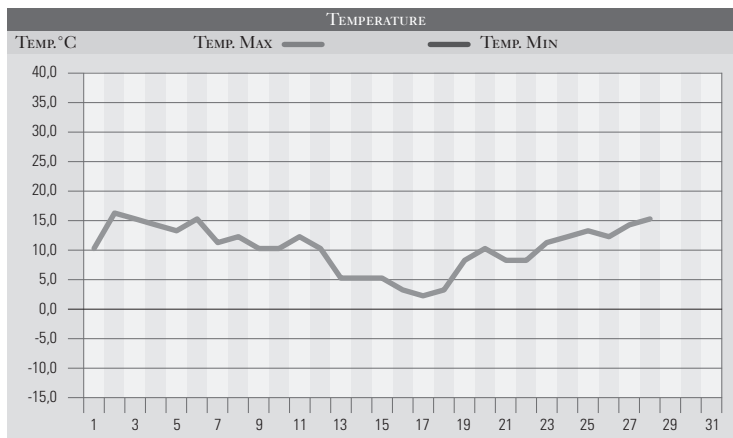


# FEBBRAIO 1994

GIORNO	T.MIN	T.MAX	PREC.(mm)	OSSERVAZIONI
1	-2,0	10,0		Brinata, sereno
2	1,0	16,0		Sereno
3	8,0	15,0		Poco nuvoloso, caldo
4	6,0	14,0		Variabile, lento peggioramento, caldo
5	7,0	13,0	3,0	Variabile, poi coperto da sud con piogge sparse
6	6,0	15,0	1,0	Coperto con piogge sparse e deboli da est sud-est
7	5,0	11,0		Variabile, caldo da est sud-est
8	6,0	12,0	2,0	Variabile con pioggia breve in serata
9	7,0	10,0		Poco nuvoloso, variabile
10	3,0	10,0		Poco nuvoloso
11	2,0	12,0		Variabile
12	1,0	10,0		Poco nuvoloso
13	1,0	5,0		Variabile, freddo
14	0,0	5,0		Brevissima nevicata in mattinata
15	-3,0	5,0		Brina, sereno
16	-2,0	3,0		Brina, sereno, nuvoloso al pomeriggio
17	1,0	2,0		Breve nevischio, freddo
18	0,0	3,0		Variabile, freddo
19	0,0	8,0		Poco nuvoloso
20	-2,0	10,0		Brina, sereno, nuvoloso in giornata
21	2,0	8,0		Variabile
22	3,0	8,0		Nuvolosità Variabile
23	5,0	11,0		Variabile
24	6,0	12,0	18,0	Piogge e temporali sparsi
25	5,0	13,0		Sereno
26	4,0	12,0		Sereno o poco nuvoloso
27	4,0	14,0		Sereno, temperature in aumento
28	3,0	15,0		Sereno o poco nuvoloso
29				
30				
31				
MED.TOT.	2,8	10,1	24,0	



RIEPILOGO		
GIORNI DI PIOGGIA	4	Mese inferiore alle medie per quanto riguarda le precipitazioni con tempo quasi sempre stabile e temperature al di sopra delle medie del periodo per la maggior parte di giorni, tranne per la seconda decade sicuramente più fredda delle altre.
TEMPERATURE MIN°C	-3,0	
TEMPERATURE MAX°C	16,0	
PIOGGIA MAX 24 H(MM)	18,0	