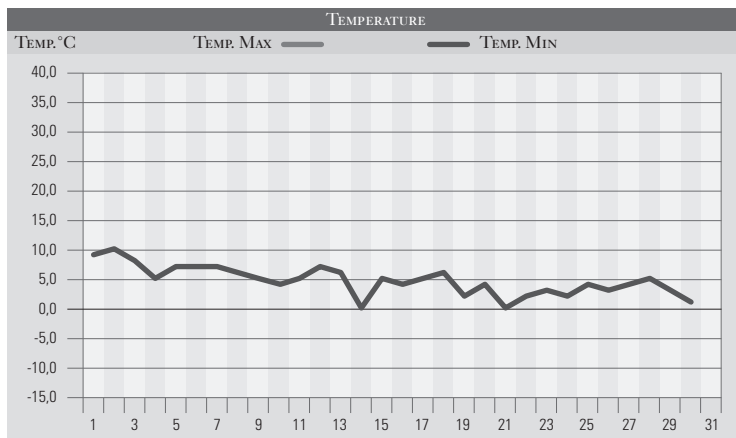


NOVEMBRE 1993

| GIORNO | T.MIN | T.MAX | PREC.(mm) | OSSERVAZIONI |
|----------|-------|-------|-----------|---|
| 1 | 9,0 | 14,0 | | Poco nuvoloso, poi coperto da sud |
| 2 | 10,0 | 13,0 | 24,0 | Coperto con piogge moderate estese |
| 3 | 8,0 | 12,0 | 18,0 | Variabile, violento temporale al pomeriggio |
| 4 | 5,0 | 11,0 | | Nuvolosità variabile, intervallo |
| 5 | 7,0 | 13,0 | 12,0 | Coperto con piogge sparse in serata |
| 6 | 7,0 | 11,0 | 23,0 | Rovesci e temporali sparsi |
| 7 | 7,0 | 12,0 | | Poco nuvoloso con qualche isolato piovasco |
| 8 | 6,0 | 13,0 | | Variabile |
| 9 | 5,0 | 11,0 | | Poco nuvoloso |
| 10 | 4,0 | 12,0 | | Sereno o poco nuvoloso |
| 11 | 5,0 | 12,0 | | Variabile, lento peggioramento |
| 12 | 7,0 | 10,0 | 34,0 | Coperto con piogge estese dal pomeriggio |
| 13 | 6,0 | 9,0 | | Poco nuvoloso, freddo |
| 14 | 0,0 | 11,0 | | Brina al mattino, sereno, giornata luminosa |
| 15 | 5,0 | 8,0 | 3,0 | Coperto, piogge sparse, neve a Norcia |
| 16 | 4,0 | 7,0 | 11,0 | Piogge in mattinata da nord, neve/800m |
| 17 | 5,0 | 9,0 | | Variabile |
| 18 | 6,0 | 8,0 | | Nuvolosità Variabile |
| 19 | 2,0 | 3,0 | 3,0 | Coperto con deboli piogge |
| 20 | 4,0 | 7,0 | | Variabile, freddo |
| 21 | 0,0 | 2,0 | 18,0 | Piogge estese, neve/400m, PG 10cm, /500m 30cm |
| 22 | 2,0 | 4,0 | | Freddo, nuvolosità variabile |
| 23 | 3,0 | 4,0 | | Nuvolosità variabile |
| 24 | 2,0 | 5,0 | | Poco nuvoloso |
| 25 | 4,0 | 6,0 | | Variabile |
| 26 | 3,0 | 6,0 | 2,0 | Coperto con brevi piogge estese dal mattino |
| 27 | 4,0 | 8,0 | | Nuvoloso |
| 28 | 5,0 | 10,0 | | Variabile per correnti da sud |
| 29 | 3,0 | 4,0 | 3,0 | Coperto, rovesci sparsi in serata |
| 30 | 1,0 | 1,0 | 1,0 | Coperto, brevi neviccate anche in pianura |
| 31 | | | | |
| MED.TOT. | 4,6 | 8,5 | 152,0 | |



RIEPILOGO

| | | |
|----------------------|------|--|
| GIORNI DI PIOGGIA | 12 | Terzo mese consecutivo con precipitazioni notevolmente al di sopra delle medie del periodo. Temperature in costante flessione ed episodio con neve anche a quote basse nella terza decade. |
| TEMPERATURE MIN °C | 0,0 | |
| TEMPERATURE MAX °C | 14,0 | |
| PIOGGIA MAX 24h (MM) | 34,0 | |