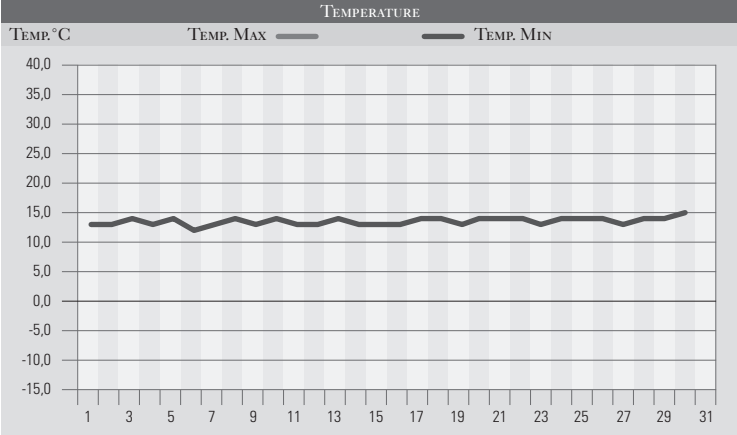


GIUGNO 1993

GIORNO	T.MIN	T.MAX	PREC.(mm)	OSSERVAZIONI
1	13,0	26,0		Sereno
2	13,0	27,0		Sereno, forte siccità
3	14,0	27,0		Sereno, nuvoloso al pomeriggio
4	13,0	26,0		Sereno o poco nuvoloso
5	14,0	27,0		Sereno
6	12,0	25,0		Sereno
7	13,0	26,0		Sereno o poco nuvoloso
8	14,0	27,0		Sereno
9	13,0	26,0		Sereno, continua la forte siccità
10	14,0	25,0		Sereno
11	13,0	26,0		Sereno o poco nuvoloso
12	13,0	25,0		Sereno
13	14,0	24,0	4,0	Brevi rovesci al pomeriggio
14	13,0	25,0	6,0	Temporalì sparsi, più frequenti in Appennino
15	13,0	26,0		Sereno
16	13,0	27,0		Sereno
17	14,0	28,0		Sereno o poco nuvoloso
18	14,0	28,0		Sereno
19	13,0	27,0		Sereno o poco nuvoloso
20	14,0	28,0		Sereno, nuvoloso al pomeriggio
21	14,0	27,0		Sereno, ancora forte siccità
22	14,0	28,0		Sereno
23	13,0	26,0		Sereno o poco nuvoloso
24	14,0	28,0		Sereno, siccità
25	14,0	29,0		Sereno o poco nuvoloso
26	14,0	29,0		Sereno
27	13,0	29,0		Sereno
28	14,0	30,0		Sereno o poco nuvoloso
29	14,0	30,0		Sereno
30	15,0	31,0		Sereno o poco nuvoloso
31				
MED.TOT.	13,5	27,1	10,0	



RIEPILOGO		
GIORNI DI PIOGGIA	2	Fortissima siccità (appena 220mm dall'inizio dell'anno), acuita dall'ennesimo mese assolutamente avaro di precipitazioni, con temperature elevate e cieli sereni.
TEMPERATURE MIN °C	15,0	
TEMPERATURE MAX °C	31,0	
PIOGGIA MAX 24 H (MM)	6,0	