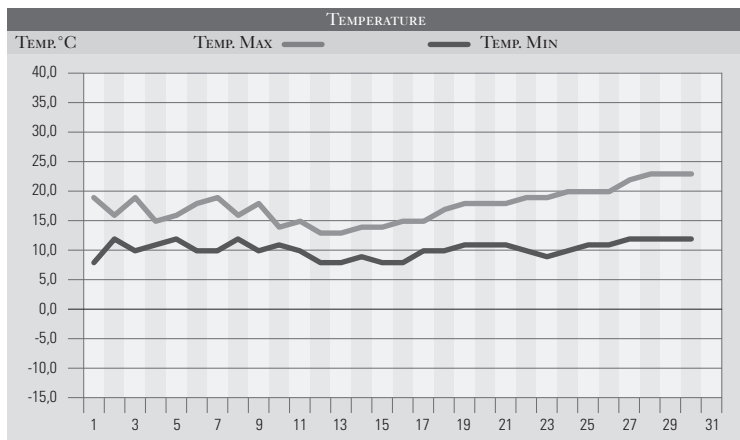


APRILE 1993

GIORNO	T.MIN	T.MAX	PREC.(mm)	OSSERVAZIONI
1	9,0	19,0		Sereno
2	12,0	16,0	10,0	Coperto, con piogge estese, dalle 12 alle 16
3	10,0	19,0		Poco nuvoloso
4	11,0	15,0	8,0	Sereno, coperto al pomeriggio, piogge in serata
5	12,0	16,0		Coperto, poi variabile al pomeriggio
6	10,0	18,0		Variabile
7	10,0	19,0		Poco nuvoloso
8	12,0	16,0	2,0	Temporale improvviso e violento da nord-ovest su PG
9	10,0	18,0		Variabile
10	11,0	14,0	8,0	Variabile, peggioramento da ovest, piogge dal pom.
11	10,0	15,0	24,0	Temporali nella notte e al mattino, forti
12	8,0	13,0	5,0	Roveschi sparsi
13	8,0	13,0	20,0	Coperto, temporali a ripetizione, freddo
14	9,0	14,0	6,0	Coperto, dalla serata piogge deboli ed estese
15	8,0	14,0	3,0	Coperto, piogge deboli
16	8,0	15,0		Nuvoloso da nord
17	10,0	15,0		Variabile
18	10,0	17,0		Sereno
19	11,0	18,0		Sereno o poco nuvoloso
20	11,0	18,0		Sereno
21	11,0	18,0		Sereno o poco nuvoloso
22	10,0	19,0		Sereno
23	9,0	19,0		Sereno o poco nuvoloso
24	10,0	20,0		Variabile
25	11,0	20,0		Pioviggi
26	11,0	20,0		Cielo velato
27	12,0	22,0		Cielo velato africano
28	12,0	23,0		Cielo velato, temperature in aumento
29	12,0	23,0		Nuvoloso da sud
30	12,0	23,0		Nuvoloso
31				
MED.TOT.	10,3	17,6	86,0	



RIEPILOGO		
GIORNI DI PIOGGIA	9	Mese nella norma sia dal punto di vista delle precipitazioni che da quello delle temperature, con le precipitazioni concentrate tutte nella prima quindicina di giorni.
TEMPERATURE MIN °C	8,0	
TEMPERATURE MAX °C	23,0	
PIOGGIA MAX 24 H (MM)	24,0	