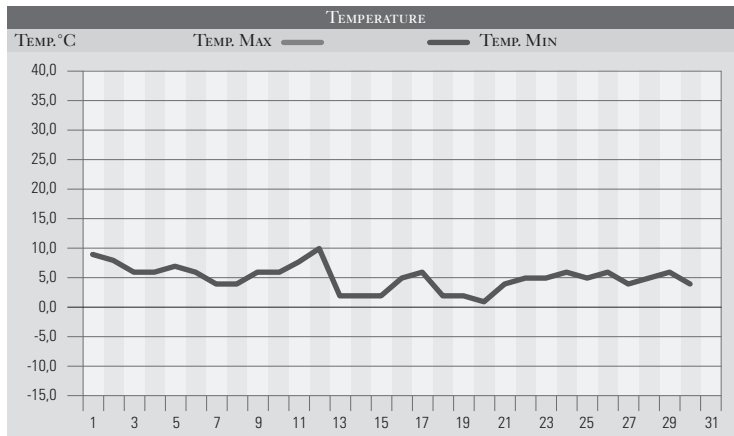


NOVEMBRE 1992

GIORNO	T.MIN	T.MAX	PREC.(mm)	OSSERVAZIONI
1	9,0	12,0	1,0	Coperto con pioviggini
2	8,0	12,0	12,0	Coperto con piogge dal mattino, abbondanti a sud-est
3	6,0	11,0		Sereno
4	6,0	13,0		Sereno o poco nuvoloso
5	7,0	12,0		Nebbia persistente
6	6,0	11,0		Sereno
7	4,0	12,0		Sereno o poco nuvoloso
8	4,0	10,0		Sereno
9	6,0	12,0		Variabile
10	6,0	13,0		Poco nuvoloso
11	8,0	13,0		Variabile
12	10,0	13,0	2,0	Rovesci in mattinata poi sereno
13	2,0	7,0	20,0	Coperto, piogge estese dal pom, freddo neve/1000m
14	2,0	8,0		Sereno
15	2,0	7,0	2,0	Coperto, pioviggine, freddo
16	5,0	13,0	2,0	Coperto con deboli piogge, aumento della temp.
17	6,0	12,0	22,0	Piogge sparse, freddo in serata, neve abb/800m
18	3,0	7,0	4,0	Variabile da nord, piogge sparse, neve/800m
19	3,0	8,0		Sereno
20	2,0	10,0		Sereno o poco nuvoloso
21	4,0	11,0		Sereno
22	5,0	10,0		Nebbia poi poco nuvoloso
23	5,0	12,0		Nebbia al mattino, poi poco nuvoloso
24	6,0	10,0		Nebbia, poi poco nuvoloso
25	5,0	9,0		Sereno
26	6,0	10,0		Sereno o poco nuvoloso
27	4,0	9,0		Sereno
28	5,0	10,0		Nebbia, poi poco nuvoloso
29	6,0	9,0		Nebbia al mattino, poco nuvoloso al pomeriggio
30	4,0	10,0		Sereno
31				
MED.TOT.	5,1	10,5	65,0	



RIEPILOGO		
GIORNI DI PIOGGIA	8	Mese che si presenta sostanzialmente inferiore alla norma per quanto riguarda le precipitazioni, con una seconda parte totalmente asciutta e nebbiosa, con temperature al di sopra della norma.
TEMPERATURE MIN °C	2,0	
TEMPERATURE MAX °C	13,0	
PIOGGIA MAX 24H (MM)	22,0	