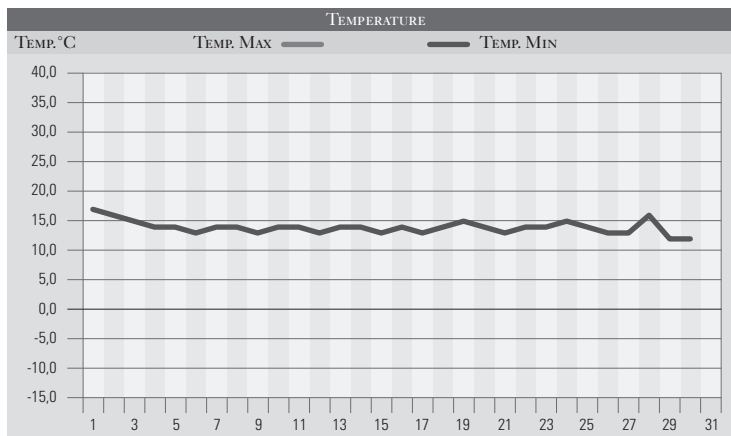


SETTEMBRE 1992

GIORNO	T.MIN	T.MAX	PREC.(mm)	OSSERVAZIONI
1	17,0	25,0	6,0	Pioggia in mattinata, poi sole splendido
2	16,0	28,0		Sereno
3	15,0	27,0		Sereno o poco nuvoloso
4	14,0	26,0		Sereno
5	14,0	27,0		Sereno, caldo
6	13,0	26,0		Sereno o poco nuvoloso
7	14,0	28,0		Sereno
8	14,0	27,0		Sereno o poco nuvoloso
9	13,0	26,0		Sereno o poco nuvoloso
10	14,0	28,0		Sereno
11	14,0	27,0		Sereno o poco nuvoloso
12	13,0	26,0		Nuvolosità variabile
13	14,0	28,0		Sereno
14	14,0	29,0		Sereno, temperatura in aumento
15	13,0	28,0		Sereno
16	14,0	29,0		Sereno o poco nuvoloso
17	13,0	26,0		Sereno
18	14,0	28,0		Sereno o poco nuvoloso
19	15,0	27,0		Sereno
20	14,0	28,0		Sereno
21	13,0	26,0		Sereno, continua il periodo siccitoso
22	14,0	27,0		Sereno, nuvoloso al pomeriggio
23	14,0	28,0		Sereno o poco nuvoloso
24	15,0	27,0		Sereno
25	14,0	28,0		Sereno o poco nuvoloso
26	13,0	26,0		Sereno, ad oggi solo 470mm di pioggia caduti, siccità
27	13,0	26,0	12,0	Pioggia di moderata, intensità continua dalla serata
28	16,0	23,0	33,0	Pioggia abbondante di notte, miglioramento al pom.
29	12,0	24,0	1,0	Nuvolosità variabile, rovesci al pomeriggio
30	12,0	24,0		Poco nuvoloso
31				
MED.TOT.	13,9	26,8	52,0	



RIEPILOGO		
GIORNI DI PIOGGIA	4	Ulteriore accentuazione della siccità con un mese stabile caldo e soleggiato che presenta precipitazioni importanti solo dal giorno 27, quando si manifesta un vero e proprio cambio della circolazione generale atmosferica.
TEMPERATURE MIN°C	12,0	
TEMPERATURE MAX°C	29,0	
PIOGGIA MAX 24 H(MM)	33,0	