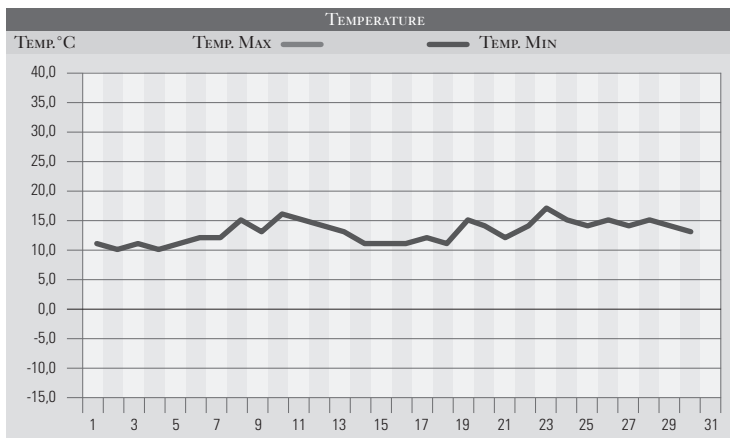


GIUGNO 1992

GIORNO	T _{MIN}	T _{MAX}	PREC.(mm)	OSSERVAZIONI
1	11,0	24,0		Nuvolosità variabile
2	10,0	25,0		Nuvoloso
3	11,0	24,0		Nuvolosità variabile
4	10,0	25,0		Cielo variabile
5	11,0	24,0	2,0	Nuvolosità variabile con rovesci
6	12,0	22,0	8,0	Rovesci sparsi al pomeriggio
7	12,0	23,0	13,0	Coperto, piogge estese al mattino, temporale di sera
8	15,0	24,0	14,0	Rovesci anche forti sul Perugino
9	13,0	24,0		Variabile, piovvaschi a sud-est
10	16,0	25,0	27,0	Temporalì al pom, allagamenti a Papiano e Cerqueto
11	15,0	18,0	10,0	Coperto, piogge dal pomeriggio estese
12	14,0	18,0	18,0	Coperto, piogge estese e persistenti, freddo
13	13,0	19,0	2,0	Rovesci, miglioramento dal pomeriggio
14	11,0	20,0		Sereno
15	11,0	22,0		Sereno o poco nuvoloso
16	11,0	24,0		Sereno
17	12,0	24,0		Nuvolosità variabile
18	11,0	25,0		Temporalì sparsi a nord della regione
19	15,0	22,0	14,0	Temporale in serata, breve ma forte ed esteso
20	14,0	24,0		Sereno
21	12,0	27,0		Sereno, temperature in aumento
22	14,0	33,0		Sereno, caldo da scirocco
23	17,0	30,0		Nuvolosità variabile
24	15,0	29,0	8,0	Rovesci sparsi al pomeriggio
25	14,0	27,0		Nuvolosità variabile
26	15,0	27,0	8,0	Rovesci sparsi al pomeriggio
27	14,0	28,0		Poco nuvoloso
28	15,0	28,0		Sereno
29	14,0	29,0		Poco nuvoloso, tramontana
30	13,0	26,0		Poco nuvoloso, tramontana, temp in diminuzione
31				
MED.TOT.	13,0	24,7	124,0	



RIEPILOGO		
GIORNI DI PIOGGIA	11	Mese sostanzialmente fresco e piovoso con frequenti episodi temporaleschi diffusi e temperature mai elevate, apporto precipitativo superiore alle medie del periodo.
TEMPERATURE MIN °C	10,0	
TEMPERATURE MAX °C	33,0	
PIOGGIA MAX 24h (MM)	27,0	