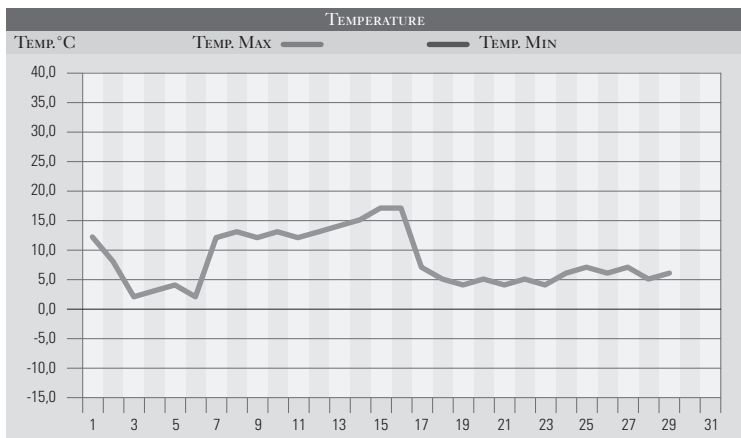


# FEBBRAIO 1992

GIORNO	T.MIN	T.MAX	PREC.(mm)	OSSERVAZIONI
1	3,0	12,0		Sereno
2	-2,0	8,0		Sereno, brinate
3	-3,0	2,0		Coperto, freddo, scorrimento da ovest
4	-2,0	3,0		Sereno, gelate
5	1,0	4,0		Sereno
6	-3,0	2,0		Sereno, gelate
7	-2,0	12,0		Sereno, gelate
8	3,0	13,0		Nuvolosità variabile, caldo
9	2,0	12,0		Nuvolosità variabile temperature in aumento
10	4,0	13,0		Nuvolosità variabile
11	3,0	12,0		Nuvolosità variabile, temperature in aumento
12	5,0	13,0	5,0	nuvolosità variabile, caldo, rovesci al mattino
13	4,0	14,0		Poco nuvoloso, caldo
14	3,0	15,0		Poco nuvoloso
15	4,0	17,0		Poco nuvoloso, ulteriore aumento della temperatura
16	3,0	17,0		Poco nuvoloso, caldo
17	3,0	7,0	4,0	Variabile, dal pomeriggio neve /400m
18	-2,0	5,0		Tramontana, freddo intenso
19	-3,0	4,0		Sereno con venti di tramontana
20	-2,0	5,0		Freddo intenso
21	-4,0	4,0		Tramontana, freddo intenso, gelate
22	-1,0	5,0		Sereno, brinate
23	-3,0	4,0		Tramontana, freddo intenso
24	-1,0	6,0		Brinate al mattino
25	-1,0	7,0		Sereno, brinate
26	-2,0	6,0		Tramontana, freddo intenso, gelate, siccità crescente
27	-1,0	7,0		Tramontana, freddo intenso
28	-1,0	5,0		Tramontana, freddo
29	-2,0	6,0		Sereno, Tramontana, freddo intenso
30				
31				
Med.Tot.	0,1	8,3	9,0	



RIEPILOGO		
GIORNI DI PIOGGIA	2	Ennesimo mese siccitoso caratterizzato da una prima e terza decade di freddo intenso, intervallate da un periodo con temperature al di sopra delle medie, e comunque arido di precipitazioni.
TEMPERATURE MIN °C	-4,0	
TEMPERATURE MAX °C	17,0	
PIOGGIA MAX 24 H (MM)	5,0	