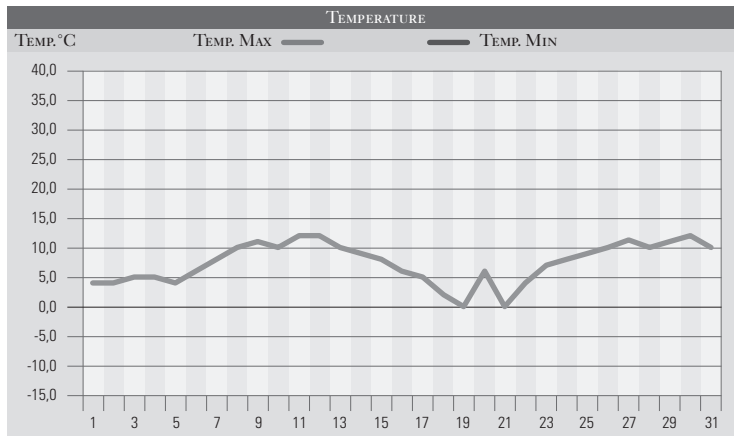


GENNAIO 1992

GIORNO	T.MIN	T.MAX	PREC.(mm)	OSSERVAZIONI
1	-5,0	4,0		Freddo, gelate
2	-3,0	4,0		Gelate su tutta la regione
3	-4,0	5,0		Freddo, gelate
4	-5,0	5,0		Freddo, gelate, sereno
5	-4,0	4,0		Freddo, gelate
6	3,0	6,0		Nuvolosità stratificata
7	5,0	8,0		Nuvolosità variabile
8	6,0	10,0		Nuvolosità stratificata
9	6,0	11,0		Nuvolosità variabile, caldo
10	8,0	10,0	10,0	Coperto con piogge sparse, neve/1000m
11	5,0	12,0		Nuvolosità variabile
12	1,0	12,0		Nuvolosità stratificata
13	2,0	10,0		Nuvolosità variabile
14	4,0	9,0		Nuvolosità stratificata
15	3,0	8,0		Nuvolosità variabile
16	-2,0	6,0		Sereno, brinate
17	-4,0	5,0		Sereno, brinate
18	-1,0	2,0		Nebbia
19	-1,0	0,0		Nebbia
20	5,0	6,0	1,0	Coperto, pioviggini
21	4,0	0,0	4,0	Coperto, nevischio, dalla sera neve abb/200m, cm 6
22	2,0	4,0	5,0	Neve nella notte/400m, poi temperatura in aumento
23	3,0	7,0		Poco nuvoloso, temperature superiori alle medie
24	2,0	8,0		Poco nuvoloso
25	2,0	9,0		Sereno o poco nuvoloso
26	3,0	10,0		Poco nuvoloso, temperature superiori alle medie
27	4,0	11,0		Sereno o poco nuvoloso
28	-1,0	10,0		Sereno, brinate
29	-2,0	11,0		Sereno, brinate nelle pianure e nelle valli
30	-1,0	12,0		Sereno, brinate
31	-1,0	10,0		Sereno, brinate al mattino
Med.Tot.	1,1	7,4	20,0	



RIEPILOGO		
GIORNI DI PIOGGIA	4	Mese molto siccitoso con temperature spesso superiori alle medie del periodo, soprattutto nei valori massimi, con un episodio nevoso intorno al 20 del mese, con neve anche in pianura.
TEMPERATURE MIN °C	-5,0	
TEMPERATURE MAX °C	12,0	
PIOGGIA MAX 24h (MM)	10,0	