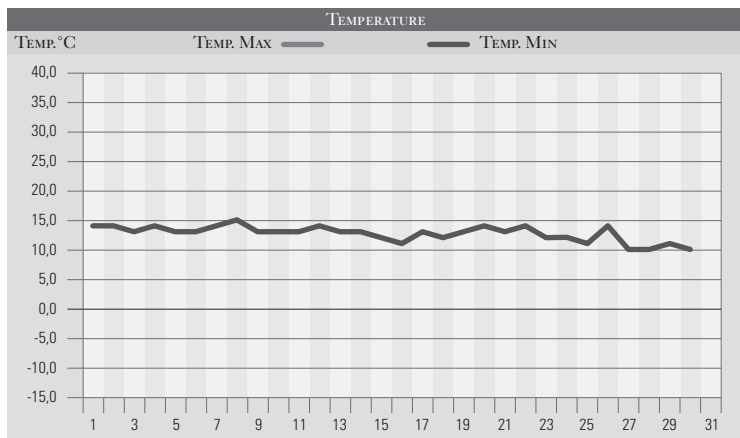


SETTEMBRE 1991

GIORNO	T.MIN	T.MAX	PREC.(mm)	OSSERVAZIONI
1	14,0	31,0		Sereno
2	14,0	30,0		Nuvolosità variabile
3	13,0	29,0		Poco nuvoloso
4	14,0	30,0		Sereno
5	13,0	27,0		Sereno o poco nuvoloso
6	13,0	27,0		Sereno
7	14,0	26,0		Poco nuvoloso
8	15,0	28,0		Nuvolosità variabile con temporale (Città di Castello)
9	13,0	27,0		Sereno
10	13,0	26,0		Nuvolosità variabile
11	13,0	27,0	2,0	Al pomeriggio rovesci temporaleschi
12	14,0	28,0	10,0	Temporali, soprattutto a nord-ovest della regione
13	13,0	26,0	7,0	Temporali nella serata a sud-est della regione
14	13,0	25,0	13,0	Temporale forte ed esteso da sud-ovest
15	12,0	24,0		Variabile con rovesci sparsi (Folignate)
16	11,0	25,0		Poco nuvoloso
17	13,0	25,0		Sereno
18	12,0	24,0		Sereno o poco nuvoloso
19	13,0	26,0		Sereno
20	14,0	28,0		Sereno o poco nuvoloso
21	13,0	28,0		Sereno
22	14,0	28,0		Poco nuvoloso
23	12,0	26,0		Variabile con qualche rovescio sparso
24	12,0	24,0		Sereno con vento da nord-est
25	11,0	24,0		Sereno
26	14,0	19,0	44,0	Coperto con forti temporali, al mattino e al pom.
27	10,0	18,0	30,0	Violenti rovesci al mattino, specie su PG, sereno di sera
28	10,0	17,0		Nuvolosità variabile
29	11,0	18,0	22,0	Nella notte e fino al mattino piogge, poi poco nuv.
30	10,0	19,0		Nuvolosità variabile
31				
MED.TOT.	12,7	25,3	128,0	



RIEPILOGO		
GIORNI DI PIOGGIA	7	Mese con precipitazioni superiori alle medie, distribuite in diversi ed estesi episodi temporaleschi. Le temperature si sono mantenute sostanzialmente in linea con le medie del periodo.
TEMPERATURE MIN °C	10,0	
TEMPERATURE MAX °C	31,0	
PIOGGIA MAX 24 H (MM)	44,0	