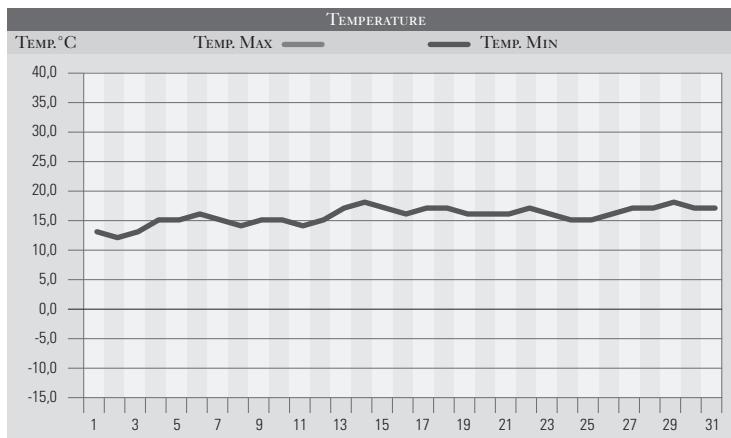


AGOSTO 1991

GIORNO	T _{MIN}	T _{MAX}	PREC.(mm)	OSSERVAZIONI
1	13,0	23,0		Poco nuvoloso, fresco da ovest
2	12,0	25,0		Sereno o poco nuvoloso, fresco
3	13,0	28,0		Fresco, tendenza ad aumento della nuvolosità da nord
4	15,0	32,0		Caldo incipiente
5	15,0	30,0		Sereno
6	16,0	31,0		Sereno, caldo
7	15,0	30,0		Sereno
8	14,0	28,0		Nuvolosità variabile
9	15,0	29,0		Nuvolosità variabile su tutta la regione
10	15,0	29,0		Poco nuvoloso
11	14,0	30,0		Sereno o poco nuvoloso
12	15,0	32,0		Poco nuvoloso, rovesci al pomeriggio
13	17,0	34,0		Poco nuvoloso, rovesci sparsi al pom, caldo
14	18,0	35,0		Poco nuvoloso, rovesci al pom, temp in aumento
15	17,0	30,0	8,0	Temporale con rovesci isolati
16	16,0	29,0		Sereno
17	17,0	32,0		Sereno, caldo
18	17,0	32,0		Sereno
19	16,0	31,0	12,0	Intenso nubifragio su PG, grandine, frane ed allag.
20	16,0	31,0		Poco nuvoloso con rovesci a sud della regione
21	16,0	32,0		Sereno, caldo
22	17,0	31,0		Sereno
23	16,0	31,0		Sereno o Poco nuvoloso
24	15,0	30,0		Sereno
25	15,0	31,0		Sereno o poco nuvoloso
26	16,0	31,0		Sereno
27	17,0	33,0		Sereno, caldo, temperature in aumento
28	17,0	33,0		Sereno, nubi aull'Appennino
29	18,0	32,0		Sereno o poco nuvoloso
30	17,0	31,0		Sereno
31	17,0	32,0		Sereno o Poco nuvoloso
MED.TOT.	15,7	30,6	20,0	



RIEPILOGO		
GIORNI DI PIOGGIA	2	Mese caldo, tipicamente estivo, con scarse precipitazioni, per lo più a carattere temporalesco pomeridiano.
TEMPERATURE MIN°C	12,0	Temperature massime spesso superiori ai valori medi del periodo.
TEMPERATURE MAX°C	35,0	
PIOGGIA MAX 24 H(MM)	12,0	