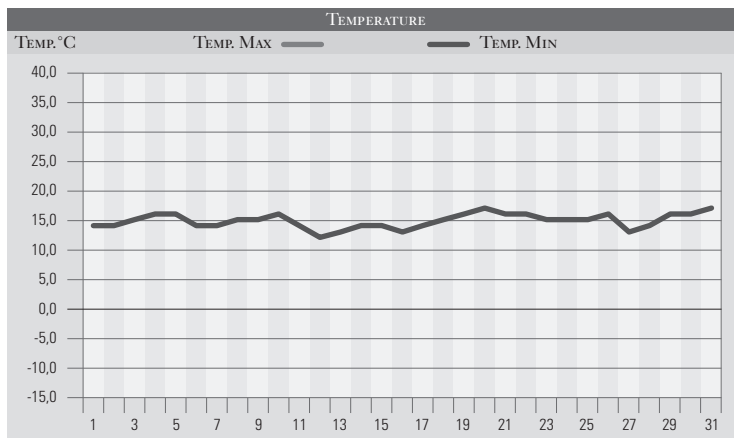


MAGGIO 1977

GIORNO	T.MIN	T.MAX	PREC.(mm)	OSSERVAZIONI
1	14,0	25,0		Bel tempo, ma siccitoso per la stagione
2	14,0	24,0		Sereno
3	15,0	25,0		Sereno, l'alta pressione resiste
4	16,0	26,0		Nuvoloso caldo
5	16,0	23,0		Molto nuvoloso
6	14,0	23,0		Nuvoloso
7	14,0	25,0		Nuvoloso-molto nuvoloso
8	15,0	24,0	3,0	Variabile, brevi rovesci sparsi
9	15,0	23,0	7,0	Variabile, rovesci
10	16,0	24,0		Sereno
11	14,0	25,0		Sereno, poco nuvoloso
12	12,0	26,0		Poco nuvoloso tendente al peggioramento
13	13,0	24,0	5,0	Molto nuvoloso, brevi piogge dalla serata
14	14,0	21,0	15,0	Variabile, temporale nella notte
15	14,0	19,0	30,0	Coperto, variabile, piogge estese (importanti)
16	13,0	18,0	13,0	Variabile-coperto, piogge intense
17	14,0	21,0	14,0	Coperto, variabile, piogge sparse ma intense
18	15,0	22,0	12,0	Coperto al mattino con altre piogge, poi velato
19	16,0	23,0		Nuvolosità stratificata di origine africana, tempo afoso
20	17,0	23,0		Variabile, temporali solo sull'alto Tevere
21	16,0	23,0		Poco nuvoloso, tendente al peggioramento
22	16,0	27,0		Sereno-poco nuvoloso
23	15,0	27,0		Quasi sereno
24	15,0	28,0		Quasi sereno
25	15,0	27,0		Sereno
26	16,0	25,0	1,0	Nuvoloso, temporali sparsi
27	13,0	26,0		Variabile
28	14,0	25,0		Sereno
29	16,0	26,0		Sereno
30	16,0	27,0		Variabile
31	17,0	29,0		Variabile
Med.Tot.	14,8	24,3	100,0	



RIEPILOGO		
GIORNI DI PIOGGIA	7	Importanti precipitazioni si sono accumulate intorno alla metà del mese un po' in tutta la regione colmando un deficit di piovosità che cominciava a preoccupare. Le piogge sono state in genere moderate ma frequenti e sono generate da una insistente circolazione depressionaria centrata sull'Italia.
TEMPERATURE MIN °C	12,0	
TEMPERATURE MAX °C	29,0	
PIOGGIA MAX 24H (MM)	30,0	