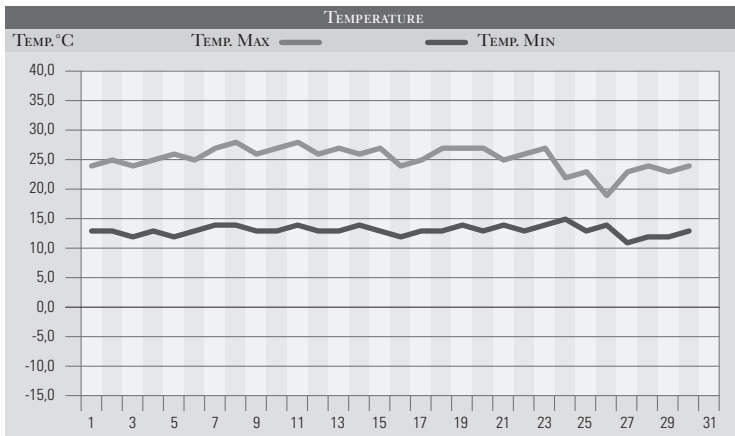


SETTEMBRE 1990

GIORNO	T.MIN	T.MAX	PREC.(mm)	OSSERVAZIONI
1	13,0	24,0	9,0	Temporale debole ed esteso in mattinata,
2	13,0	25,0	2,0	Variabile, piovvaschi nel pomeriggio
3	12,0	24,0		Poco nuvoloso
4	13,0	25,0		Sereno o poco nuvoloso
5	12,0	26,0		Sereno
6	13,0	25,0		Poco nuvoloso
7	14,0	27,0		Sereno o poco nuvoloso
8	14,0	28,0		Poco nuvoloso
9	13,0	26,0		Sereno splendido
10	13,0	27,0		Poco nuvoloso
11	14,0	28,0		Tempesta di vento da nord-est
12	13,0	26,0		Sereno limpido
13	13,0	27,0		Sereno
14	14,0	26,0		Nuvolosità variabile
15	13,0	27,0		Poco nuvoloso
16	12,0	24,0		Sereno
17	13,0	25,0		Sereno
18	13,0	27,0		Piovaschi sparsi in mattinata
19	14,0	27,0		Piovaschi al pomeriggio
20	13,0	27,0		Sereno con correnti da nord-ovest
21	14,0	25,0		Sereno
22	13,0	26,0		Sereno
23	14,0	27,0		Peggioramento in serata dopo una giornata splendida
24	15,0	22,0	22,0	Burrasca con temporale nella notte, poi variabile
25	13,0	23,0		Poco nuvoloso, variabile dal pomeriggio
26	14,0	19,0	23,0	Forte temporale a nord-ovest, breve ma violento
27	11,0	23,0		Poco nuvoloso
28	12,0	24,0		Nuvoloso
29	12,0	23,0		Poco nuvoloso
30	13,0	24,0		Sereno totale
31				
MED.TOT.	13,1	25,2	56,0	



RIEPILOGO		
GIORNI DI PIOGGIA	4	Temperature leggermente al di sopra delle medie del periodo, mentre le precipitazioni si presentano un po' al di sotto dei valori medi previsti.
TEMPERATURE MIN °C	11,0	
TEMPERATURE MAX °C	27,0	
PIOGGIA MAX 24h (MM)	23,0	