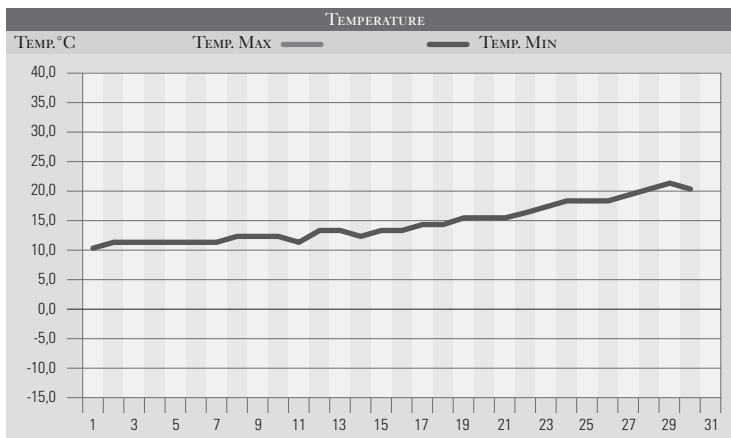


GIUGNO 1990

GIORNO	T.MIN	T.MAX	PREC.(mm)	OSSERVAZIONI
1	10,0	19,0		Sereno
2	11,0	22,0		Poco nuvoloso
3	11,0	23,0		Nuvoloso
4	11,0	24,0		Nuvolosità variabile da sud
5	11,0	23,0		nuvolosità variabile, peggioramento da sud
6	11,0	24,0	8,0	Molto nuv., cumuli nel pomeriggio, rovesci sparsi
7	11,0	23,0	3,0	Nuvolosità variabile nella notte, rovesci sparsi
8	12,0	24,0		Vento forte da sud-ovest, variabile
9	12,0	25,0		vento forte da sud-ovest, nuvolosità variabile
10	12,0	24,0		Temporal deboli ad est nel pomeriggio
11	11,0	25,0		Sereno poi velato
12	13,0	26,0		Nuvoloso da sud, brevi piogge sparse a sud-est
13	13,0	24,0		Poco nuvoloso
14	12,0	26,0		Sereno
15	13,0	25,0		Poco nuvoloso
16	13,0	26,0		Sereno o poco nuvoloso
17	14,0	25,0		Poco nuvoloso
18	14,0	24,0		Sereno
19	15,0	26,0		Poco nuvoloso
20	15,0	27,0		Sereno o poco nuvoloso
21	15,0	28,0		Poco nuvoloso
22	16,0	28,0		Nuvolosità variabile da sud
23	17,0	30,0		Sereno, cielo limpido
24	18,0	30,0		Sereno
25	18,0	30,0		Sereno o poco nuvoloso
26	18,0	30,0		Sereno, temperature in aumento
27	19,0	32,0		Sereno, caldo torrido
28	20,0	36,0		Sereno, ulteriore aumento della temperatura
29	21,0	34,0		Sereno, caldo torrido
30	20,0	35,0		Sereno, caldo
31				
Med.Tot.	14,2	26,6	11,0	



RIEPILOGO		
GIORNI DI PIOGGIA	2	Mese avaro di precipitazioni caratterizzato da un progressivo riscaldamento che culmina con una settimana di caldo intenso negli ultimi giorni del mese.
TEMPERATURE MIN °C	10,0	
TEMPERATURE MAX °C	36,0	
PIOGGIA MAX 24h (MM)	8,0	