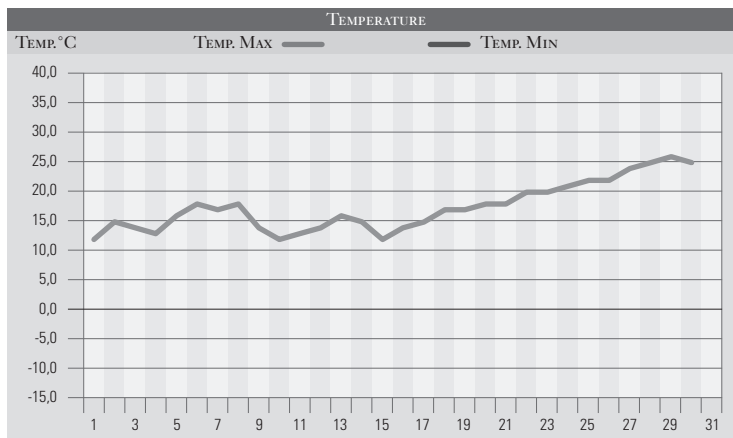


# APRILE 1977

GIORNO	T.MIN	T.MAX	PREC.(mm)	OSSERVAZIONI
1	8,0	12,0		Coperto-variabile
2	9,0	15,0		Poco nuvoloso
3	8,0	14,0		Variabile
4	9,0	13,0	5,0	Coperto, piogge sparse
5	10,0	16,0		Poco nuvoloso
6	9,0	18,0		Poco nuvoloso da sud ovest
7	8,0	17,0		Variabile
8	9,0	18,0	29,0	Coperto, piogge estese
9	7,0	14,0		Variabile
10	8,0	12,0	10,0	Coperto, pioggia, neve/700m
11	9,0	13,0		Nuvoloso-sereno
12	10,0	14,0	11,0	Coperto, piogge estese
13	9,0	16,0		Variabile da nord
14	8,0	15,0		Variabile da nord
15	3,0	12,0		Nuvoloso, venti da nord
16	-1,0	14,0		Gelata al mattino, danni all'agricoltura
17	0,0	15,0		Sereno
18	2,0	17,0		Sereno
19	3,0	17,0		Variabile, poco nuvoloso
20	4,0	18,0		Variabile
21	6,0	18,0		Poco nuvoloso-sereno
22	7,0	20,0		Sereno
23	9,0	20,0		Sereno
24	9,0	21,0		Venti occidentali, variabile
25	10,0	22,0		Variabile, temperature in aumento
26	10,0	22,0		Sereno
27	12,0	24,0		Sereno, qualche velatura
28	13,0	25,0		Cielo lattiginoso, temperature in aumento
29	14,0	26,0		Velato, nuvoloso
30	14,0	25,0		Velato, poco nuvoloso
31				
<b>MED.TOT.</b>	<b>7,9</b>	<b>17,4</b>	<b>55,0</b>	



RIEPILOGO		
GIORNI DI PIOGGIA	4	L'ondata di freddo della metà del mese rappresenta anche il momento più freddo dall'inizio dell'anno! Questo si per sottolineare l'anomalia della gelata tardiva, ma soprattutto per rimarcare quanto sia stato anomalo l'andamento delle temperature in questo scorcio di inverno-primavera.
TEMPERATURE MIN °C	-1,0	
TEMPERATURE MAX °C	26,0	
PIOGGIA MAX 24 H (MM)	29,0	