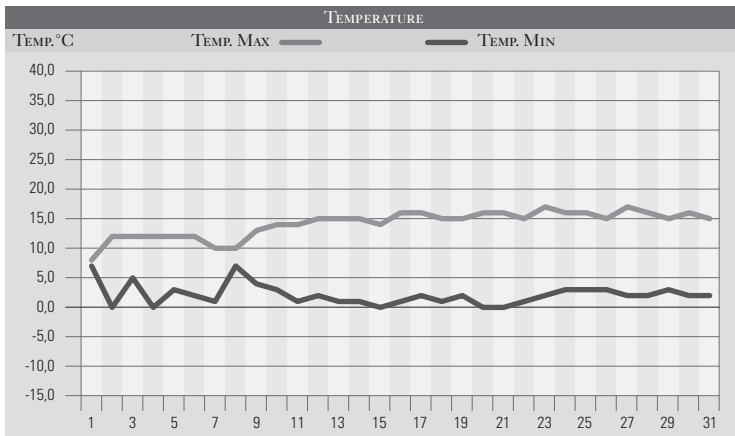


# MARZO 1989

GIORNO	T.MIN	T.MAX	PREC.(mm)	OSSERVAZIONI
1	7,0	8,0	34,0	Coperto con piogge estese ed abbondanti
2	0,0	12,0		Nuvolosità variabile da ovest
3	5,0	12,0	3,0	Coperto, piovvaschi in mattinata, temporale in serata
4	0,0	12,0		Nuvolosità variabile da nord
5	3,0	12,0		Sereno o poco nuvoloso
6	2,0	12,0		Sereno
7	1,0	10,0		Sereno o poco nuvoloso, vento da nord
8	7,0	10,0	14,0	Coperto stratificato poi pioggia abbondante
9	4,0	13,0		Coperto da nord-est, temperatura in diminuzione
10	3,0	14,0		Sereno
11	1,0	14,0		Sereno o poco nuvoloso
12	2,0	15,0		Sereno
13	1,0	15,0		Sereno, temperature in aumento
14	1,0	15,0		Sereno o poco nuvoloso
15	0,0	14,0		Sereno o poco nuvoloso, brinate
16	1,0	16,0		Sereno, brinate
17	2,0	16,0		Sereno o poco nuvoloso
18	1,0	15,0		Sereno
19	2,0	15,0		Sereno o poco nuvoloso
20	0,0	16,0		Sereno o poco nuvoloso, brinate
21	0,0	16,0		Sereno, brinate
22	1,0	15,0		Sereno o poco nuvoloso
23	2,0	17,0		Sereno, massime in aumento
24	3,0	16,0		Sereno o poco nuvoloso
25	3,0	16,0		Sereno o poco nuvoloso, siccità in aumento
26	3,0	15,0		Sereno o poco nuvoloso
27	2,0	17,0		Sereno, siccità
28	2,0	16,0		Sereno o poco nuvoloso siccità
29	3,0	15,0		Sereno o poco nuvoloso
30	2,0	16,0		Sereno
31	2,0	15,0		Sereno o poco nuvoloso
MED.TOT.	2,1	14,2	51,0	



RIEPILOGO		
GIORNI DI PIOGGIA	3	Continua il periodo siccitoso con scarse precipitazioni e temperature massime al di sopra delle medie, solo la prima decade riesce temporaneamente ad interrompere il trend di assenza di precipitazioni.
TEMPERATURE MIN°C	0,0	
TEMPERATURE MAX°C	17,0	
PIOGGIA MAX 24H (MM)	34,0	