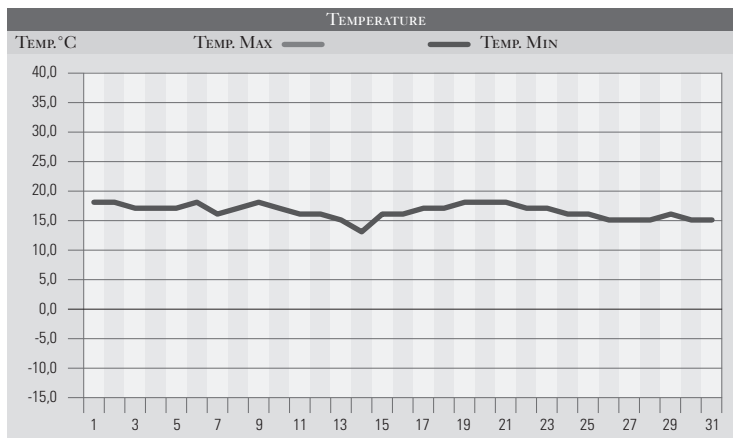


AGOSTO 1986

GIORNO	T.MIN	T.MAX	PREC.(mm)	OSSERVAZIONI
1	18,0	32,0		Sereno
2	18,0	31,0		Sereno o poco nuvoloso
3	17,0	32,0		Sereno al mattino, con debole instabilità pomeridiana
4	17,0	31,0		Sereno, tempo stabile
5	17,0	32,0		Sereno
6	18,0	32,0		Sereno, caldo
7	16,0	28,0		Sereno
8	17,0	31,0		Sereno stabile
9	18,0	30,0		Sereno
10	17,0	31,0		Sereno o poco nuvoloso
11	16,0	32,0		Vento da sud, sereno, caldo
12	16,0	32,0		Forte vento da sud, caldo afoso, poco nuvoloso
13	15,0	29,0		Diminuz. delle temp., passaggio di un fronte sulle Alpi
14	13,0	27,0	2,0	Temporale pomeridiano a Perugia-Monte Luce
15	16,0	28,0		Sereno totale limpido
16	16,0	30,0		Sereno totale limpido, pressione in aumento
17	17,0	31,0		Sereno, caldo afoso
18	17,0	31,0		Pericolo forte per incendi, vento forte da sud
19	18,0	32,0		Sereno
20	18,0	31,0		Sereno o poco nuvoloso
21	18,0	30,0		Sereno stabile
22	17,0	31,0		Sereno o poco nuvoloso
23	17,0	32,0		Sereno stabile caldo
24	16,0	32,0		Sereno stabile
25	16,0	31,0		Sereno
26	15,0	29,0		Sereno, locali temporali a nord-ovest
27	15,0	27,0		Sereno caldo attenuato
28	15,0	28,0		Sereno
29	16,0	29,0		Sereno limpido
30	15,0	28,0		Sereno
31	15,0	28,0		Sereno o poco nuvoloso
MED.TOT.	16,5	30,3	2,0	



RIEPILOGO		
GIORNI DI PIOGGIA	1	Mese tipicamente estivo caratterizzato da alte temperature e scarsissime precipitazioni, con solo episodica attività cumuliforme sui rilievi.
TEMPERATURE MIN °C	13,0	
TEMPERATURE MAX °C	32,0	
PIOGGIA MAX 24 H (MM)	2,0	